
Infratec™ NOVA / Infratec™ Spare Parts Manual

6007 7072 / Rev. 9



Rev.	Date of Issue	Revised Material
1	2014-07-02	First issue.
2	2014-08-20	Instrument name updated. Front page picture updated.
3	2015-01-05	Major update.
4	2015-09-01	General update.
5	2015-10-06	Basic Unit part numbers updated.
6	2019-03-25	Major update. Infratec added.
7	2019-07-15	Update part number of Basic Unit
8	2021-10-28	Section 3, 11, 12, 13 and 15 updated. Figure 3, 11 and 13 updated.
9	2022-04-14	Drawings and PN updated

Note: Please note that all information is liable to change without prior notice.

Table of Contents

1	General.....	1
2	Overview.....	2
3	Lamp Cooling	6
4	PC Board (Infratec NOVA).....	8
5	PC Board (Infratec).....	10
6	Hatch	12
7	Filling Unit	14
8	Filling Unit	16
9	Measuring Unit.....	18
10	Measuring Unit.....	20
11	Basic Unit (Infratec NOVA)	22
12	Basic Unit (Infratec NOVA)	24
13	Basic Unit (Infratec NOVA)	26
14	Basic Unit (Infratec)	28
15	Test Weight Module Gen. 2	30
16	Sample Transport Module Gen. 2	34
17	Instrument Accessories	36
18	Special Tools.....	36
19	Service Kit.....	36
20	Index	37

1 General

This document contains Spare Parts for Infratec™ NOVA / Infratec™.



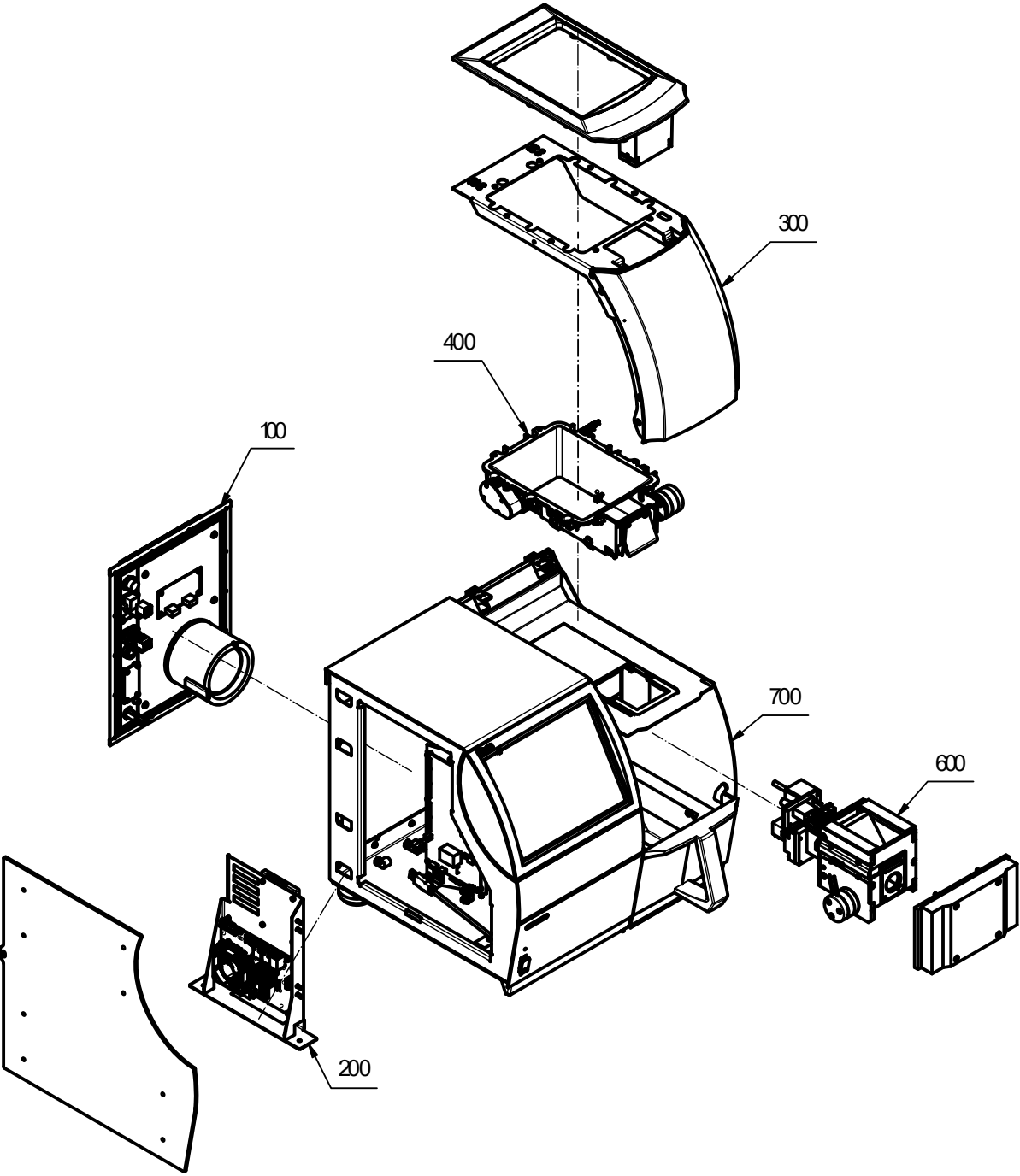
Warning

Please read Safety Precautions in the Service Manual prior to maintenance or exchange of spare parts.

The system may only be repaired by FOSS personnel or by other personnel approved by FOSS.

2 Overview

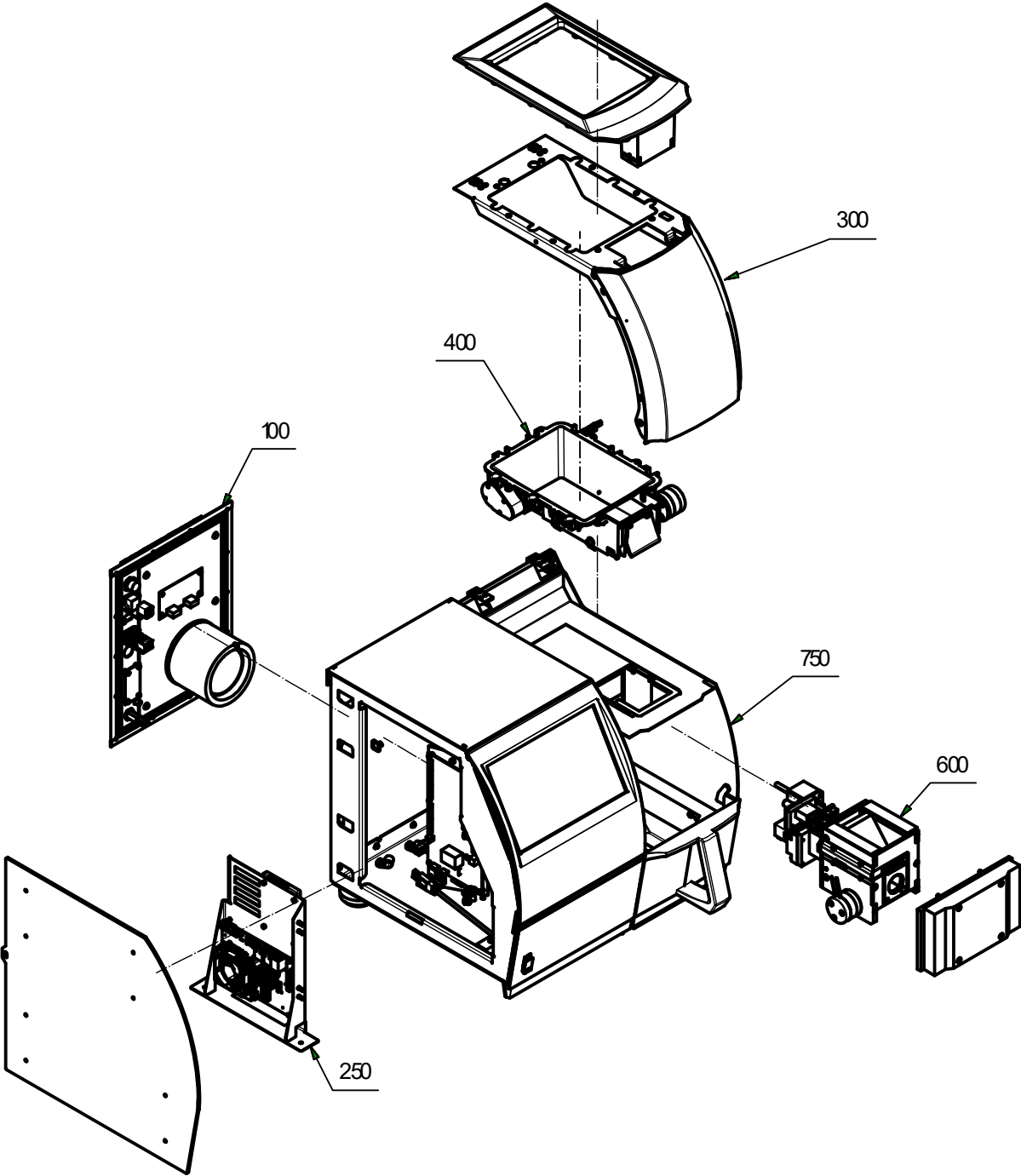
Pos.	Description	Note
100-1	Lamp Cooling Assy	
200-1	PC Board Assy Infratec NOVA	
250-1	PC Board Assy Infratec	
300-1	Hatch Cpl	
400-1	Filling Unit	
600-1	Measuring Unit	
600-2	Measuring Unit	
700-1	Basic Unit Infratec NOVA	
700-2	Basic Unit Infratec NOVA	
700-3	Basic Unit Infratec NOVA	
750-1	Basic Unit Infratec	
750-2	Basic Unit Infratec	
750-3	Basic Unit Infratec	
800-1	Test Weight Module	
800-2	Test Weight Module	
900-1	Sample Transport Module Gen. 2	



60057621 Doc. Rev:03 Doc.type:95

Fig. 1 Infratec Nova

This page is intentionally left blank.



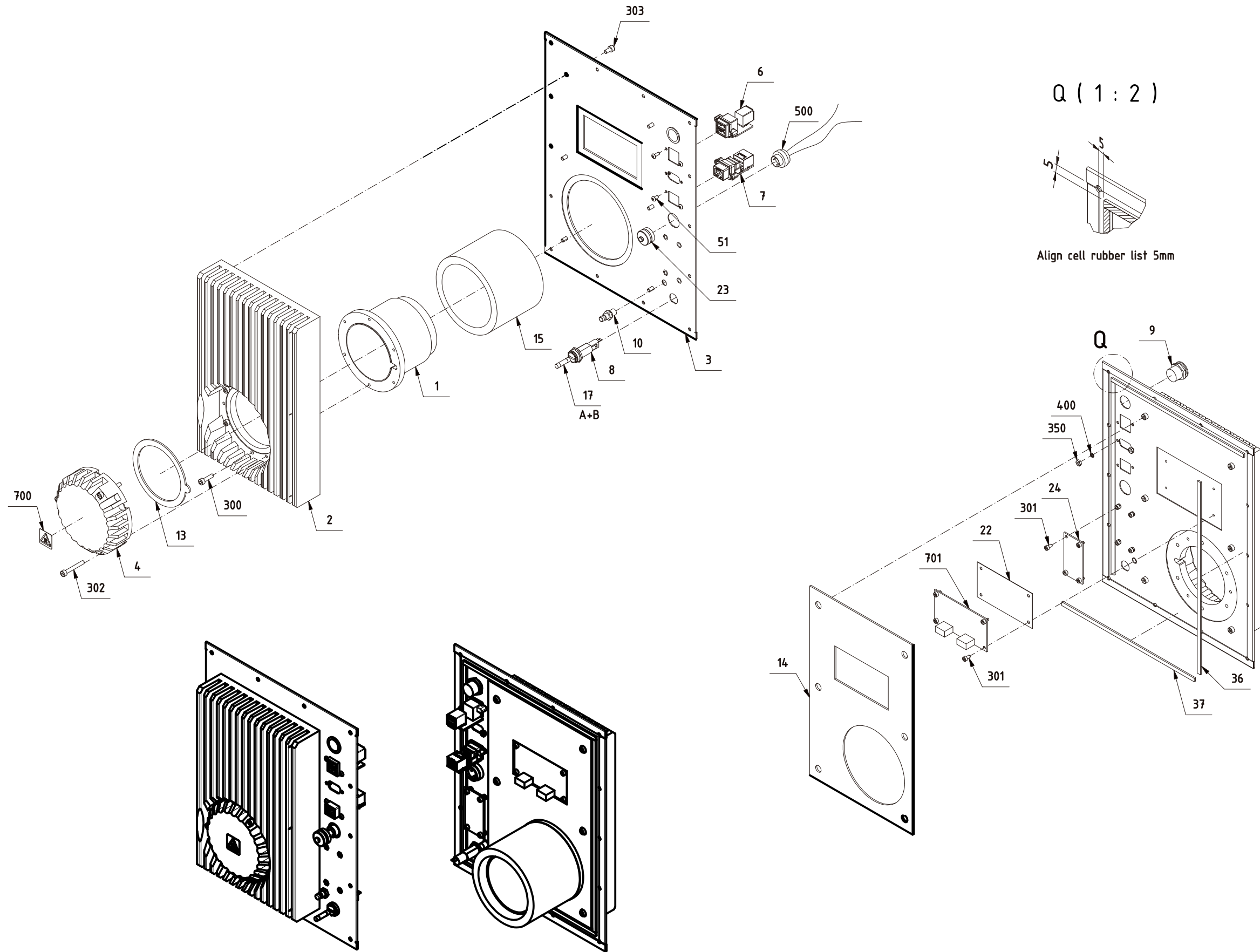
60088747 Doc Rev.01 Doctype:95

Fig. 2 Infratec

3 Lamp Cooling

Drawing No.: 60057624 **Page:** 100-1

Pos.	Part No.	Description	Prod. No.
6	60066795	Rear USB connector	60060763
7	60066796	Rear Ethernet connector	60060764
9	60048058	Power on button assy	60045310
24	60048005	Pcb assy DC Filter PCB	60040783
500	60063291	Cable 24V	
701	01052199	Pcb assy DC-DC Converter PCB	
A	10005807	Fuses (5 pcs.)	
B	60061112	Fuse kit (10 pcs. 5A)	



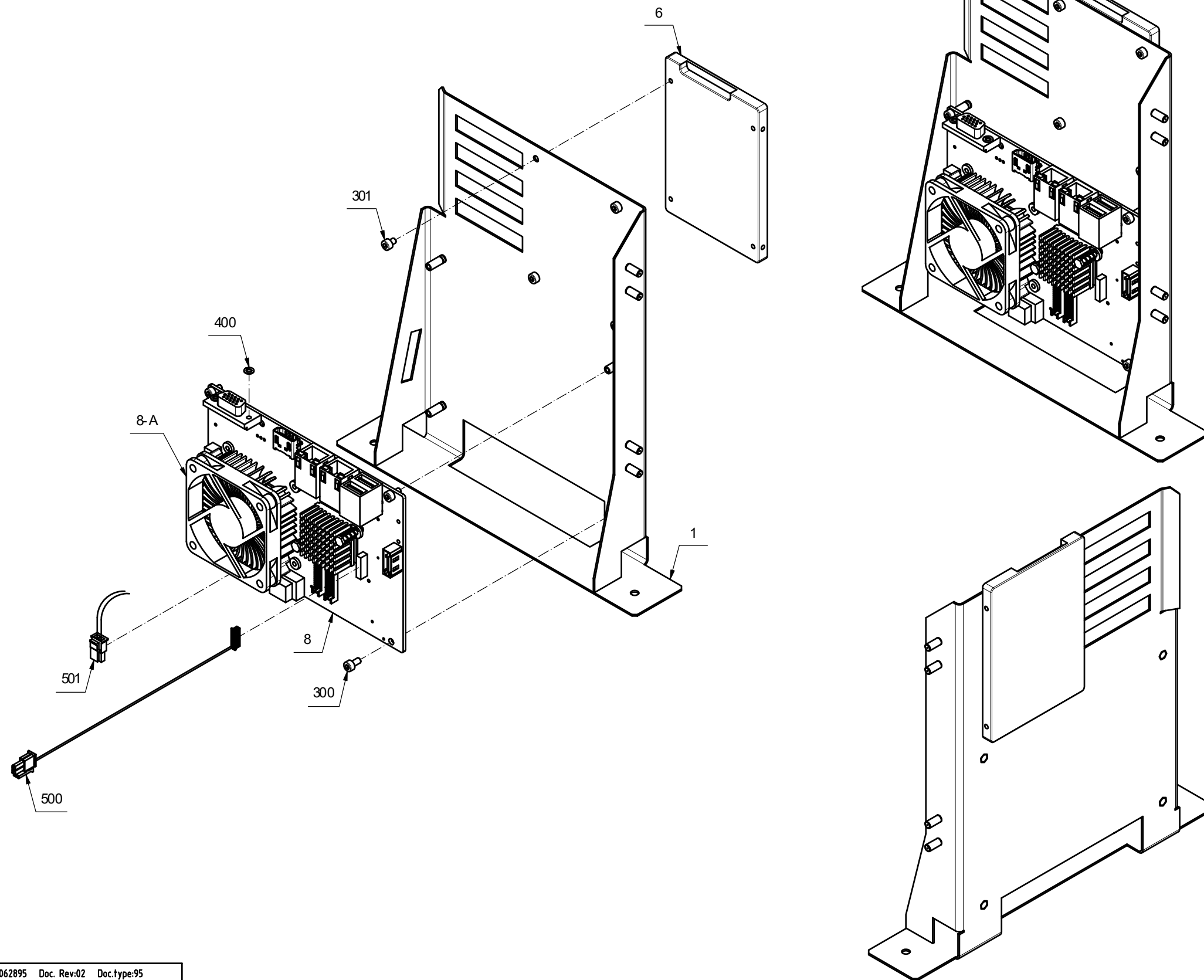
60057624 Doc. Rev:12 Doc.type:95

Fig. 3

4 PC Board (Infratec NOVA)

Drawing No.: 60062895 *Page:* 200-1

Pos.	Part No.	Description	Prod. No.
6	60080533	2.5" SATA SSD 64GB	60080355
8	60088366	Aaeon PCBoard	60072033
8-A	60072018	Fan BT05	

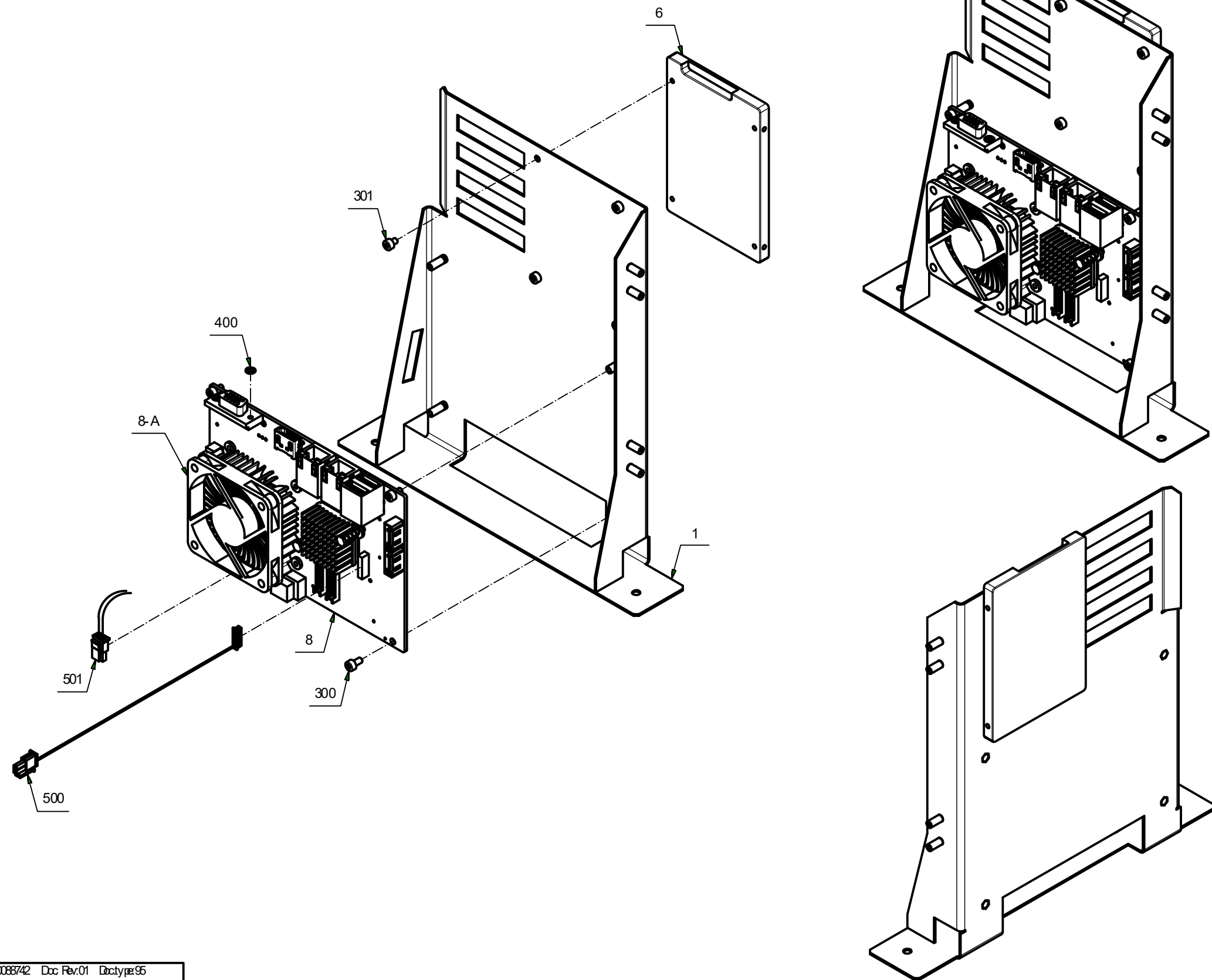


60062895 Doc. Rev:02 Doc.type:95

Fig. 4

5 PC Board (Infratec)**Drawing No.: 60088742 Page: 250-1**

Pos.	Part No.	Description	Prod. No.
6	60080533	2.5" SATA SSD 64GB	60080355
8	60089318	Aaeon PCBoard	60088741
8-A	60072018	Fan BT05	

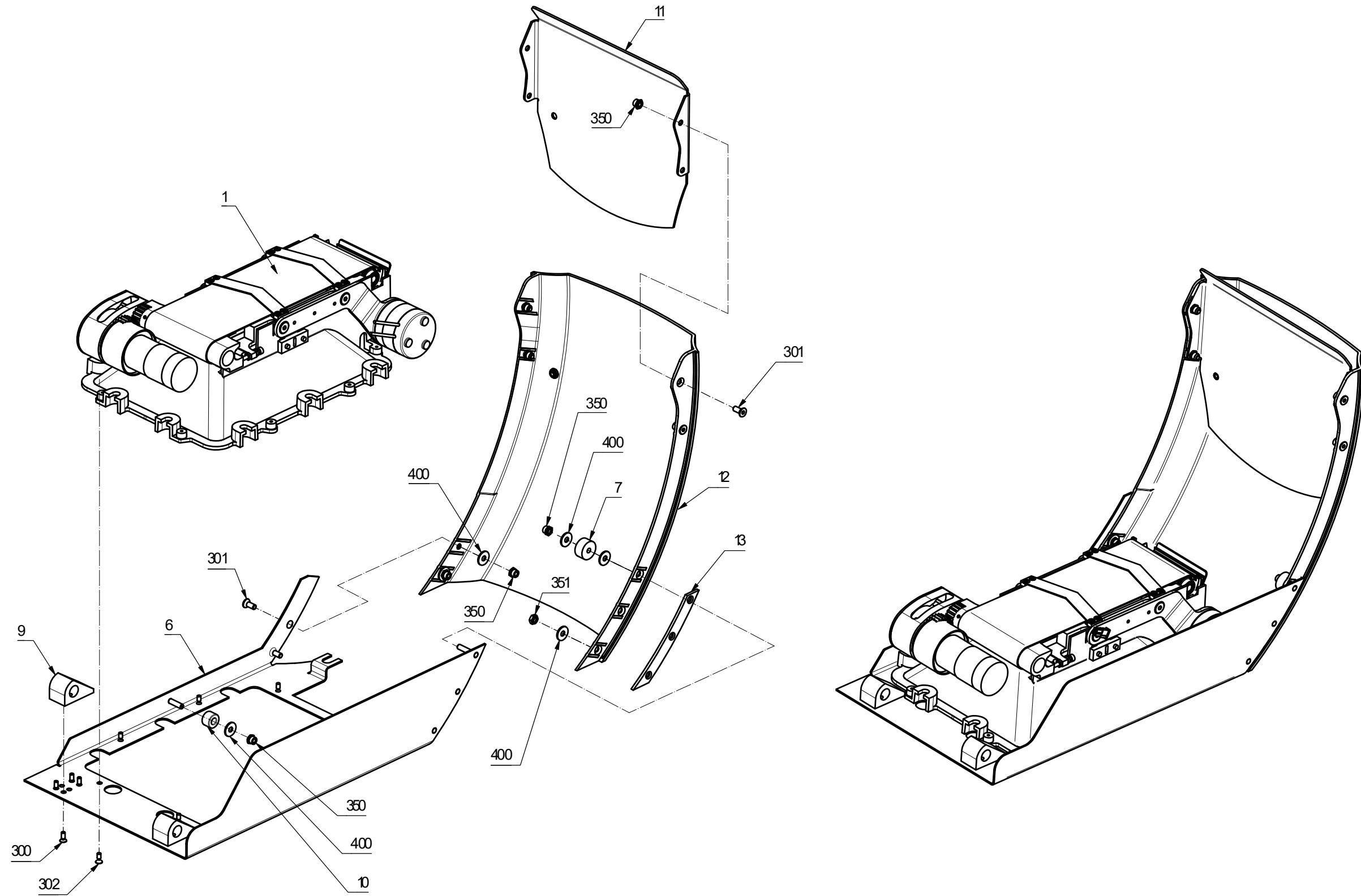


60088742 Doc Rev.01 Dctypr:95

Fig. 5

6 Hatch**Drawing No.: 60061013 Page: 300-1**

Pos.	Part No.	Description	Prod. No.
1	60072515	Filling Unit Cpl	60067141



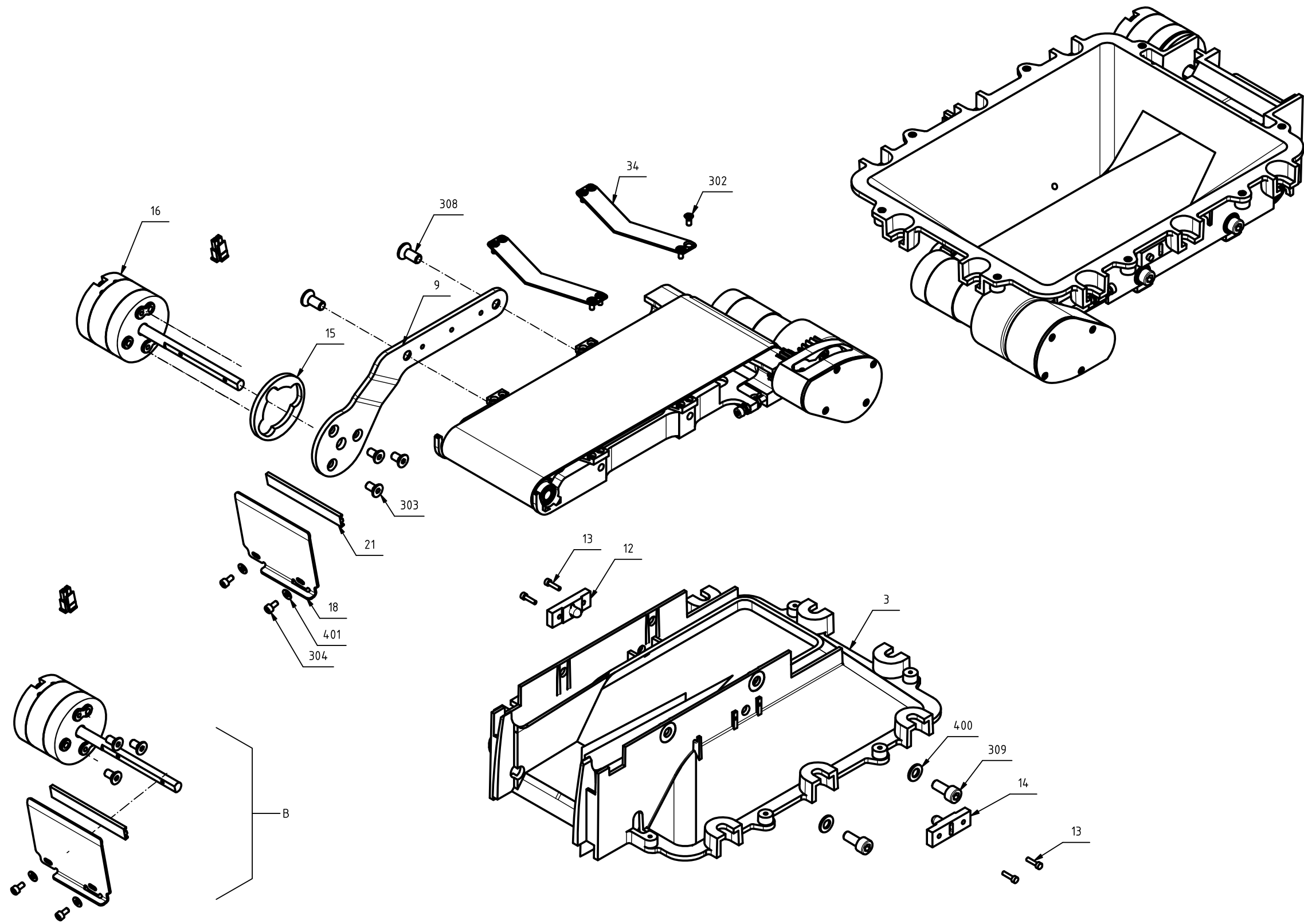
60061013 Doc. Rev:12 Doc.type:95

300

Fig. 6

7 Filling Unit**Drawing No.: 60072515** **Page: 400-1**

Pos.	Part No.	Description	Prod. No.
B	60061645	Upper shutter SP	



60067141 Doc. Rev:06 Doc.type:95

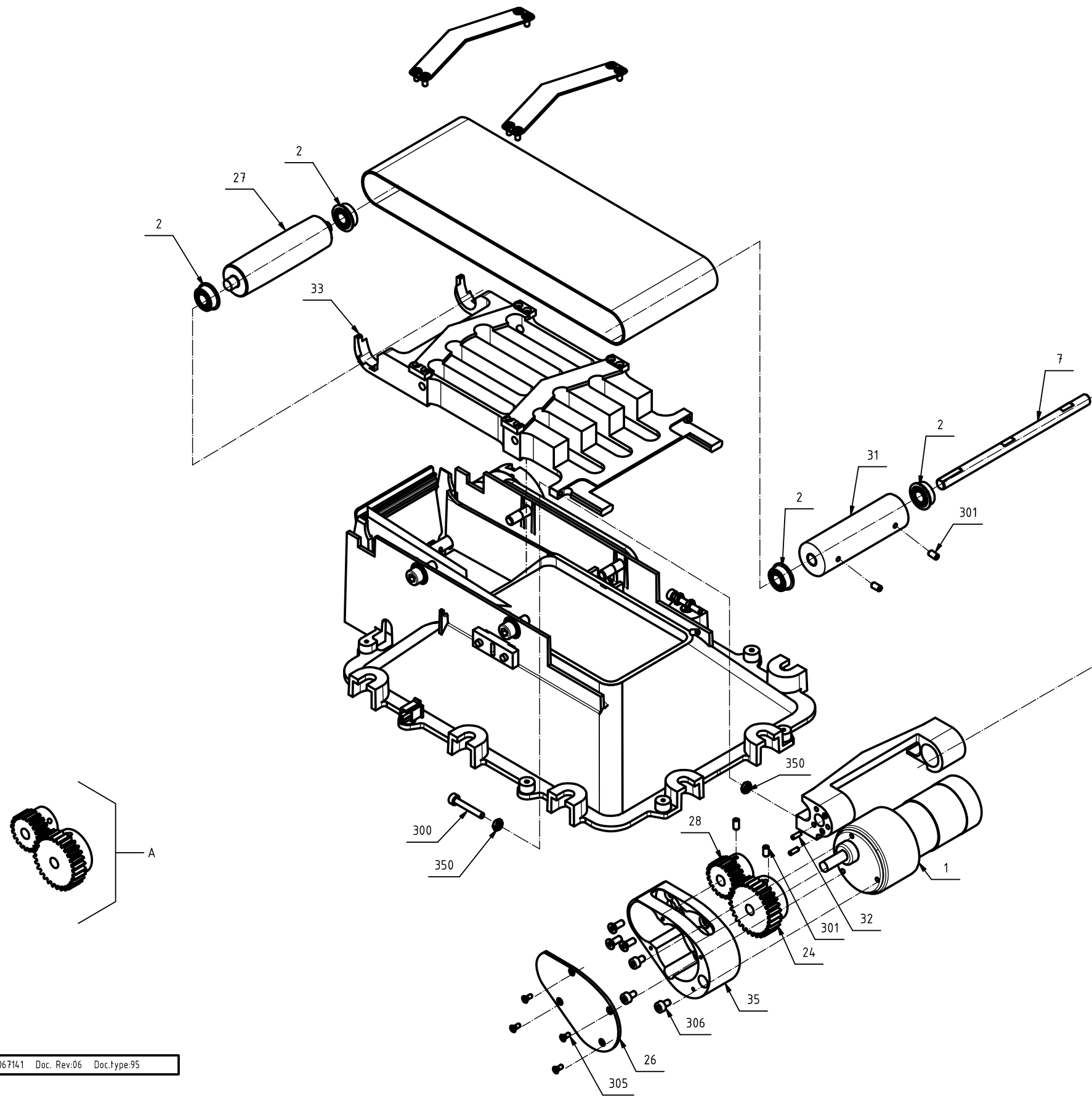
400-1

Fig. 7

8 Filling Unit

Drawing No.: 60072515 *Page: 400-2*

Pos.	Part No.	Description	Prod. No.
1	60066799	Bandmotor with cable	60063114
A	60066715	Gear Kit SP	



60067141 Doc. Rev:06 Doc.type:95

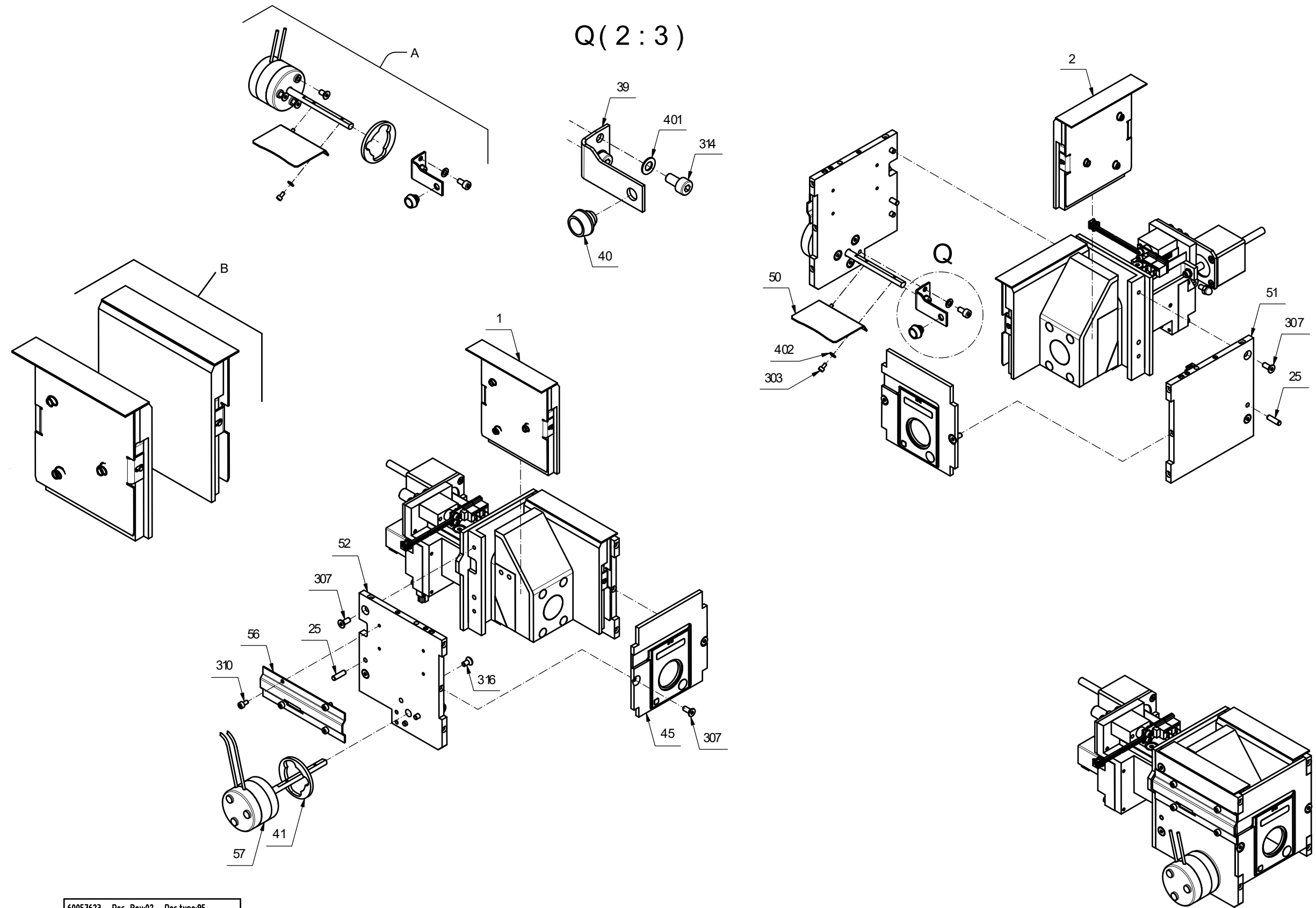
400-2

Fig. 8

9 Measuring Unit

Drawing No.: 60057623 Page: 600-1

Pos.	Part No.	Description	Prod. No.
45	60066767	Sample cell front and Speckle emitter SP	60057708
A	60061641	Lower shutter SP	
B	60079024	Left and right slide unit -SP	



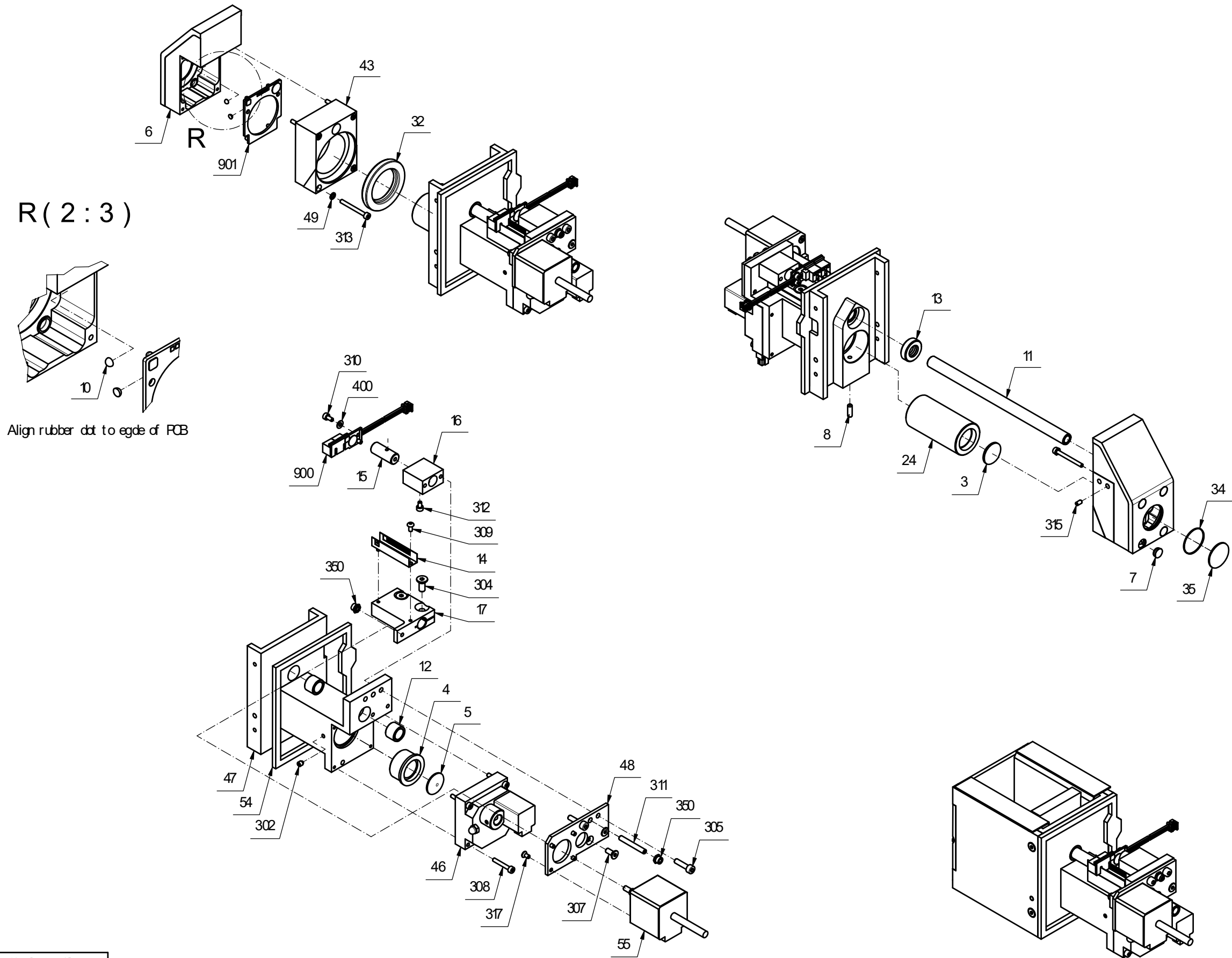
60057623 Doc. Rev:02 Doc.type:95

Fig. 9

600-1

10 Measuring Unit**Drawing No.: 60057623** **Page: 600-2**

Pos.	Part No.	Description	Prod. No.
46	60066794	Fiber holder with wl-filter and motor SP	60061761



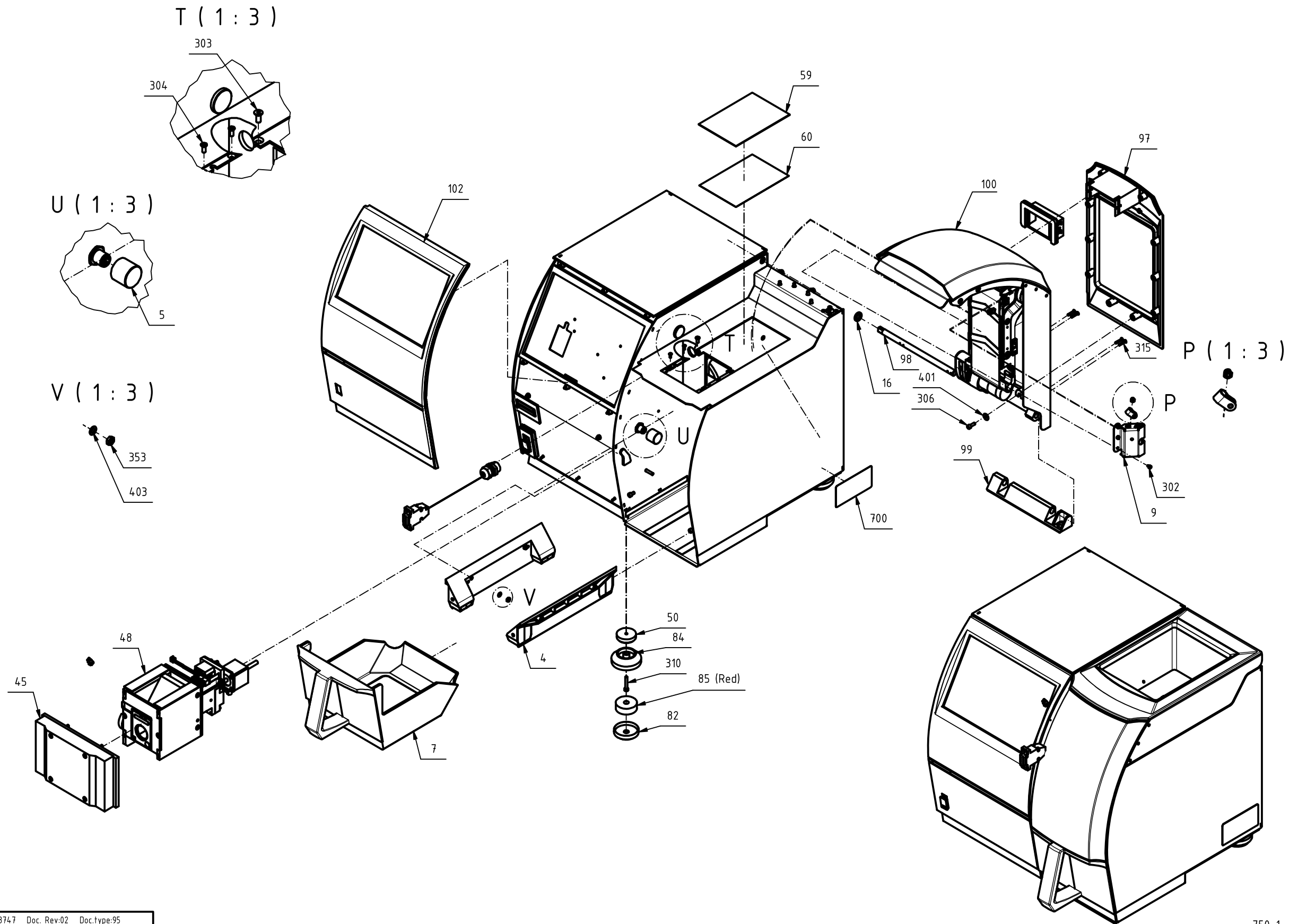
60057623 Doc. Rev:02 Doc.type:95

Fig. 10

600-2

11 Basic Unit (Infratec NOVA)**Drawing No.: 60057621 Page: 700-1**

Pos.	Part No.	Description	Prod. No.
7	60061230	Container	
45	60066862	Detector unit	60057627
48	60066861	Measuring Unit	60057623
58	60066792	Guide Unit-SP	60060235
101	60066863	Display Unit	60060363
509	60100966	Detector cable SP	



60088747 Doc. Rev.02 Doc.type:95

750-1

Fig. 11

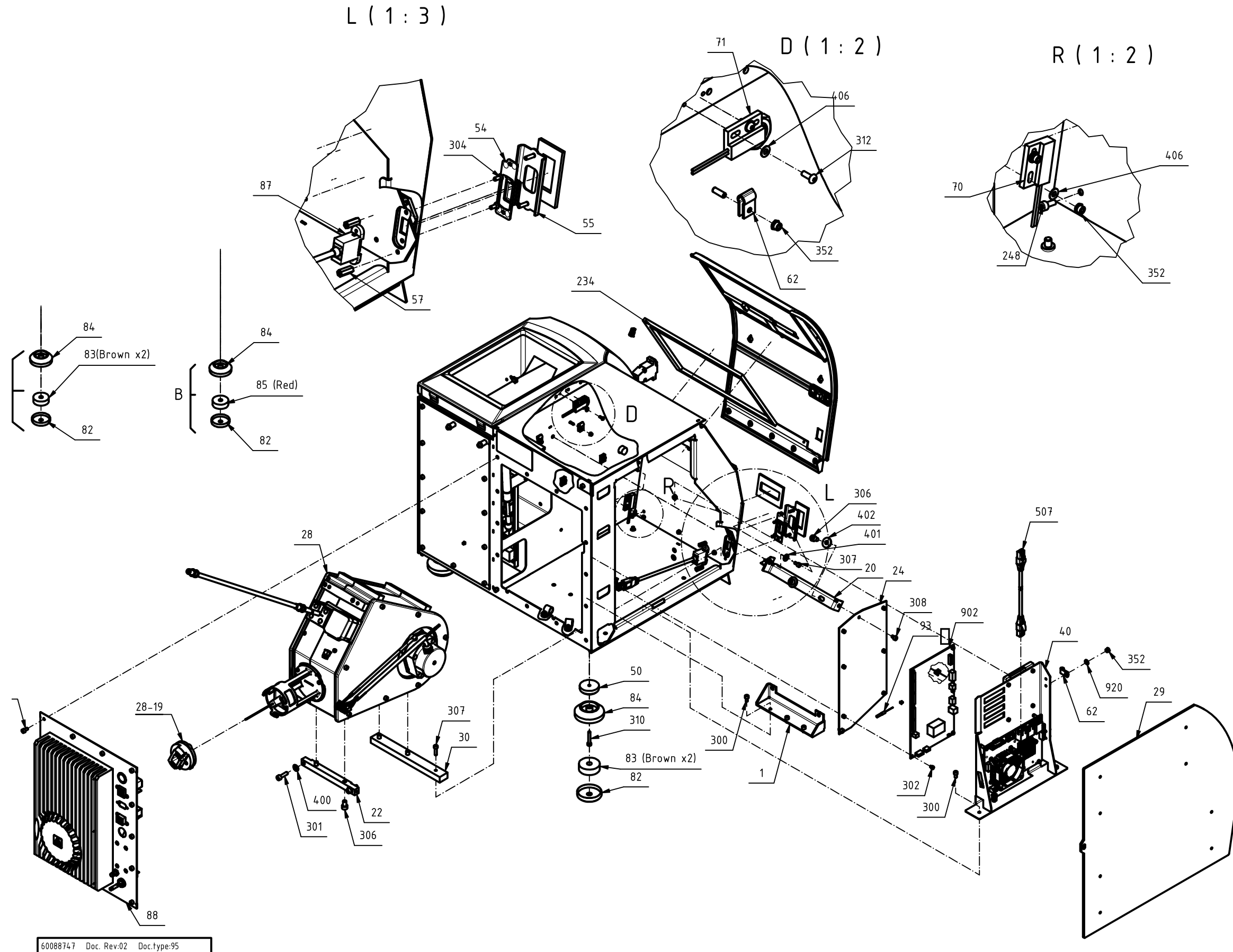
12 Basic Unit (Infratec NOVA)

Drawing No.: 60057621 **Page:** 700-2

Pos.	Part No.	Description	Prod. No.
14	60064719	Cable lamp monoch ¹⁾	
28	60064384	Monochromator	60057626
28-17	60078593	Lamp BLV 35W with wire spot focused	
28-19	60066793	Lamp holder assy - SP	60061755
40	60088365	PC Board Assy	60062895
54	60044144	USB Cover	60042947
70	60062814	Drawer Sensor	
71	60062815	Hatch Sensor	
93	60048098	Thermistor Cpl.	60047349
902	60048068	Monoc PCB	00590695
A+B	60064282	Instrument Feet kit SP ²⁾	

¹⁾ Not illustrated.

²⁾ Including 3 feet



60088747 Doc. Rev:02 Doc.type:95

Fig. 12

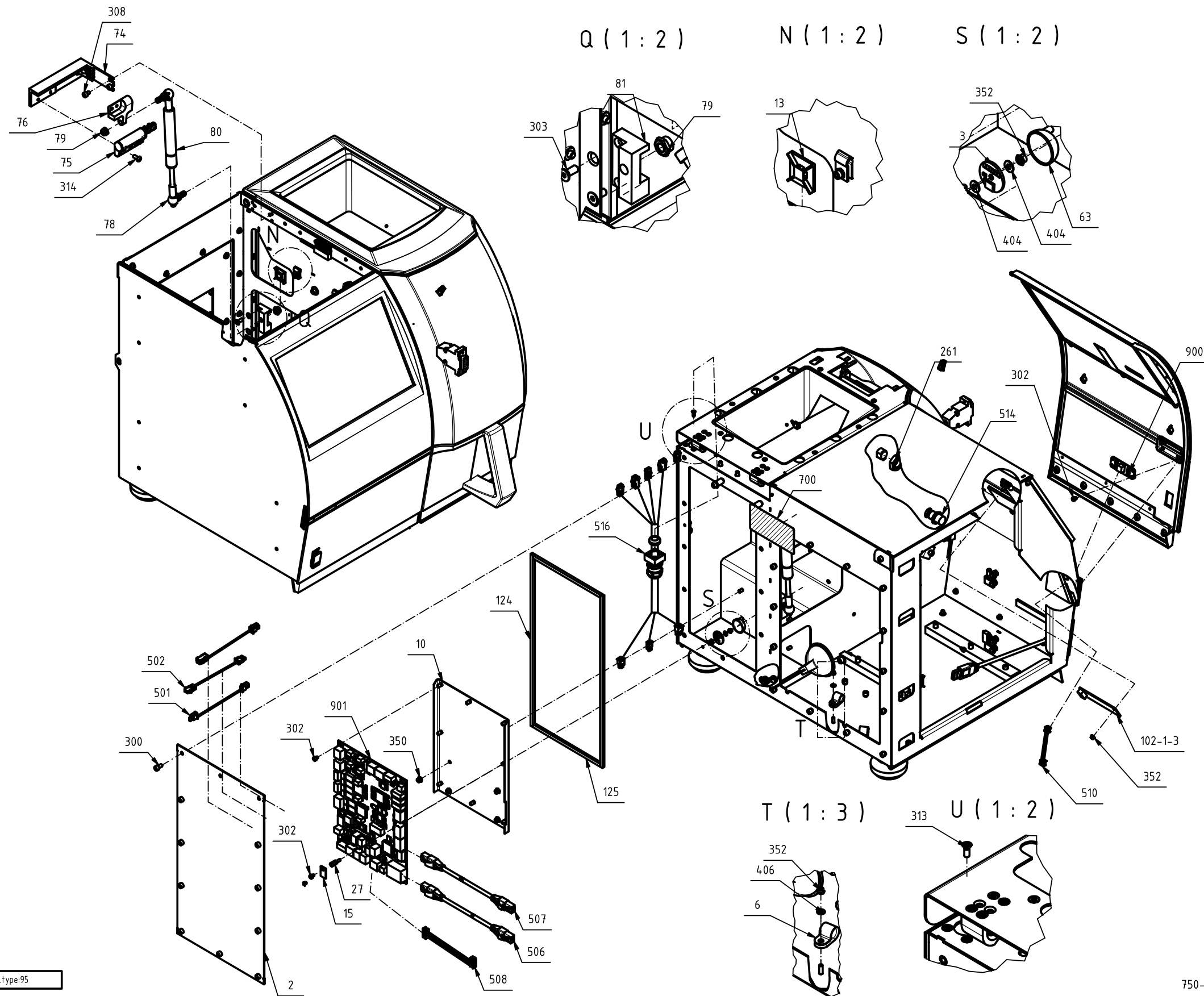
750-2

13 Basic Unit (Infratec NOVA)

Drawing No.: 60057621 **Page:** 700-3

Pos.	Part No.	Description	Prod. No.
3	60066800	Temperature Sensor PCB	60061627
15	60048004	Chassis ID	00584698
75	60063755	Friction Hinge	
80	60066797	Gas Spring -SP	60063749
500	60048020	Cable Chassis ID PCB L=90	60023887
501	60062730	Cable Monoch Power +24V	
502	60062731	Flush cable	
506	60062816	Internal Patch cable 0,6m	
507	60062817	External Patch cable 0,6m	
508	60062813	Cable CAN to Monoch PCB	
510	60062954	LED Indicator cable	
511	60083939	Cable Control CAN STM to Chassis, Gen2	
512	60063289	Cable 24V in to control	
514	60083938	Cable Control CAN TWM to Chassis, Gen2	
900	60044213	PCB LED Indicator	00590497
901	60068254	Pcb assy Control PCB	01052141
516	60083268	Autostart+bandmotor+upperlid-SP ¹⁾	

¹⁾ See TN2281 for details



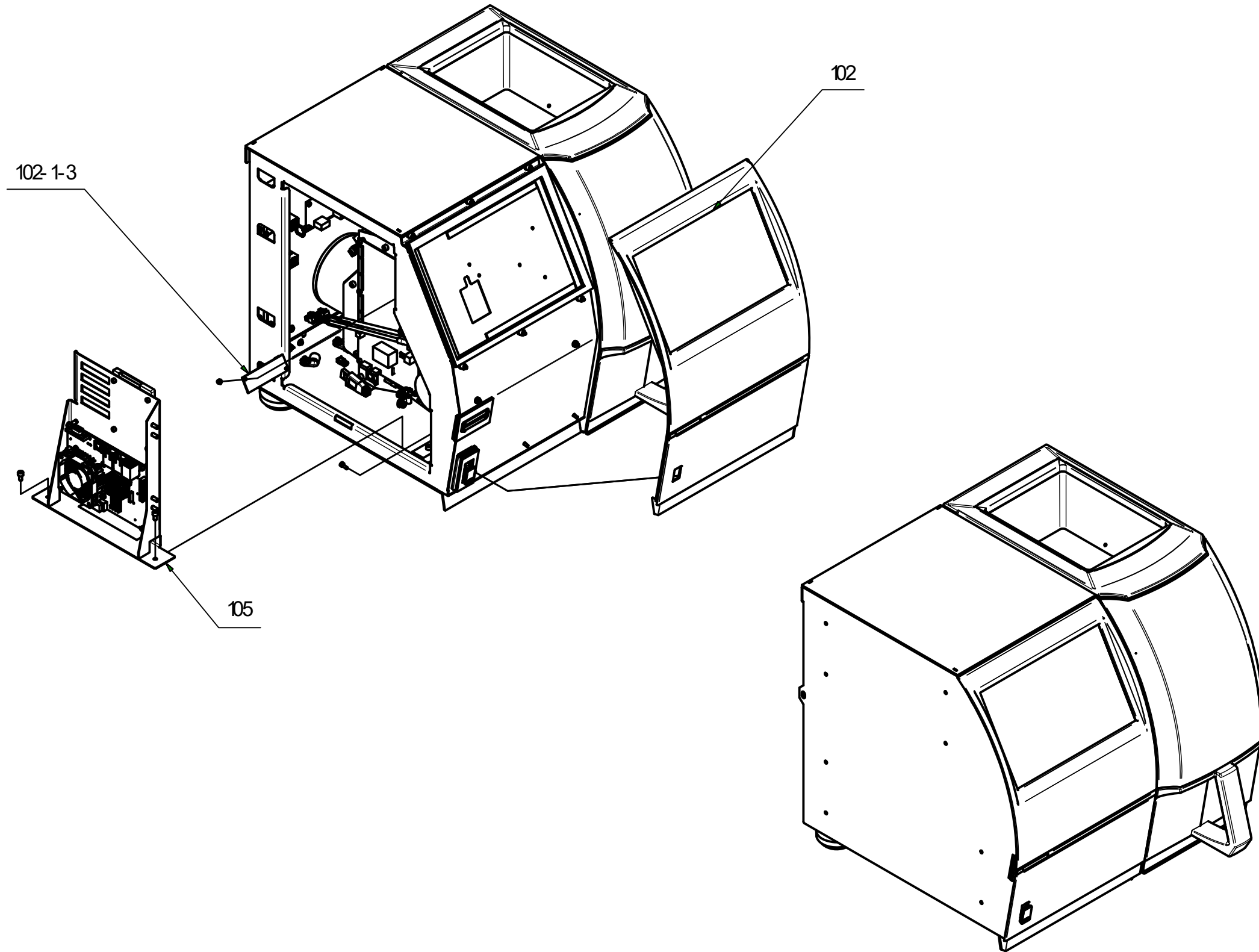
60088747 Doc. Rev.02 Doc.type:95

750-3

Fig. 13

14 Basic Unit (Infratec)**Drawing No.: 60088747 Page: 750-1**

Pos.	Part No.	Description	Prod. No.
102	60089319	Display Unit Assy	60088740
102-1-3	60089350	Display adapter PCB	60088746
105	60089317	PC Board Assy (Win.incl)	60088742



60089747 Doc. Rev.02 Duct type 95

750-1

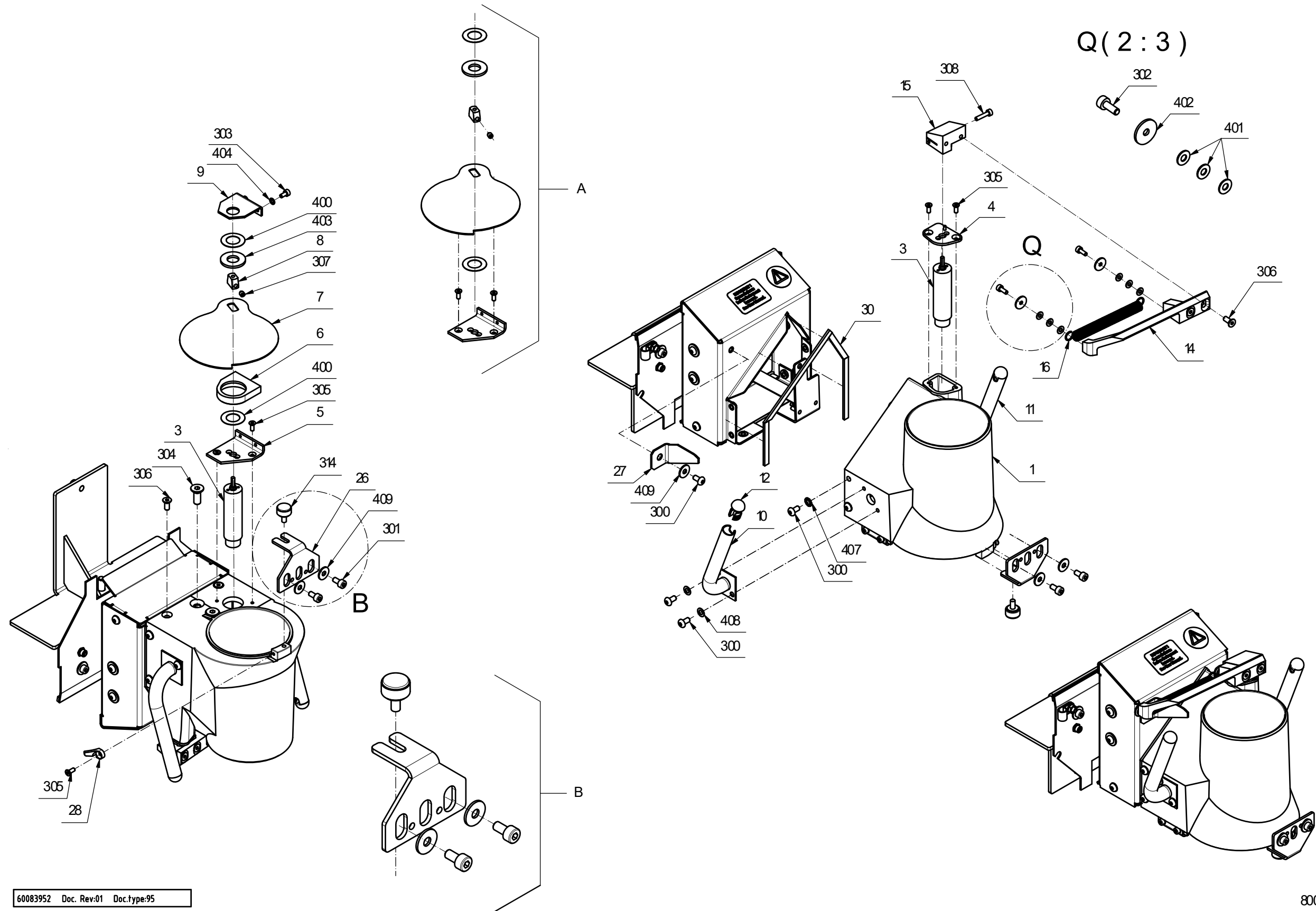
Fig. 14

15 Test Weight Module Gen. 2

Drawing No.: 60083952 **Page:** 800-1-2

Pos.	Part No.	Description	Prod. No.
2	60066801	Loadcell assy	60060365
3	15710107	Motor Dc 15V	
29	60066802	TWM PCB-SP	01052147
A	60065386	Bottom shutter SP	
B	60079026	Transport safety Kit	
C	60083957	Test Weight Module Gen2	

Service Kit: 60083959 TWM Gen 2 cable upgrade kit SP

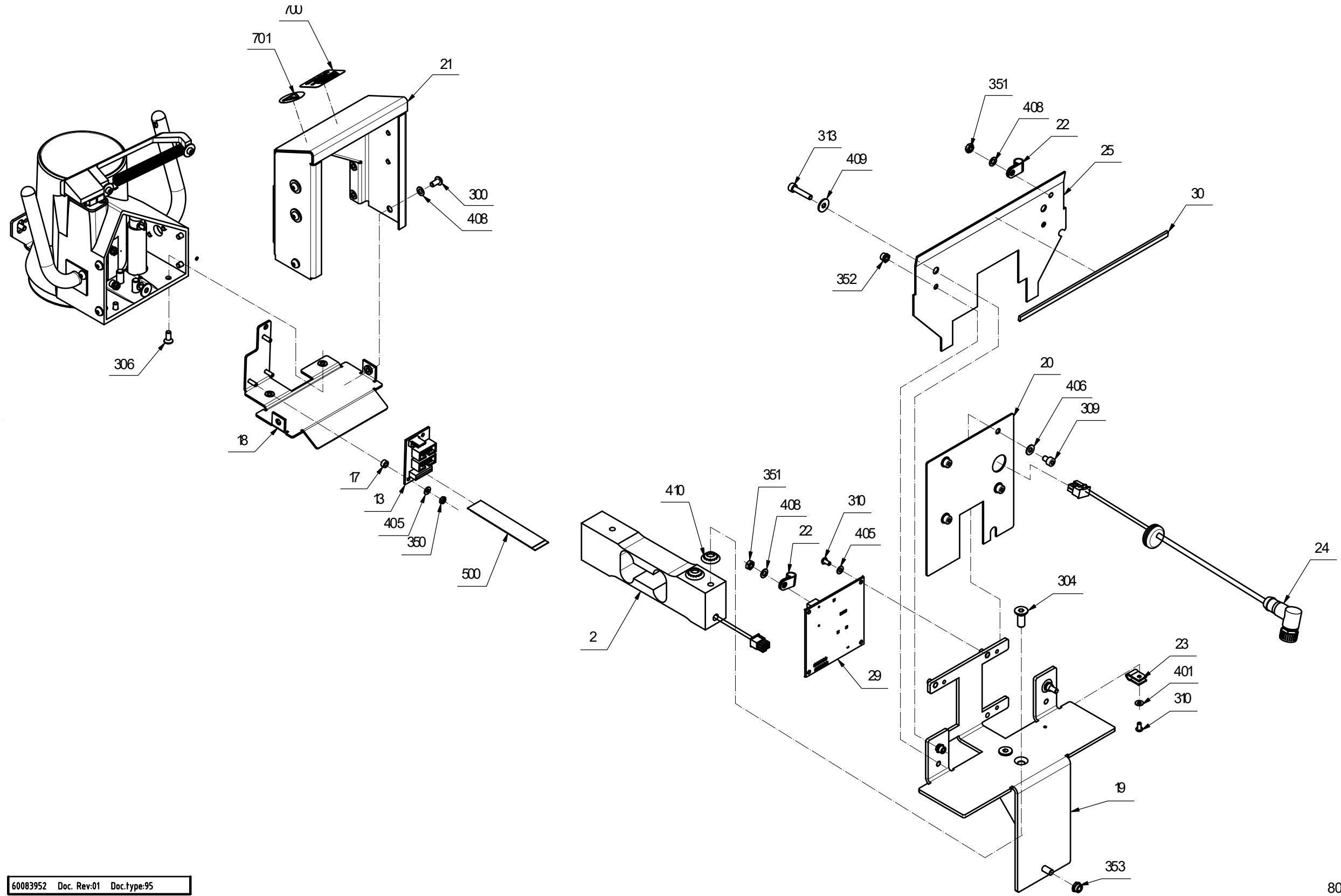


60083952 Doc. Rev:01 Doc.type:95

800-1

Fig. 15

This page is intentionally left blank.



60083952 Doc. Rev:01 Doc.type:95

Fig. 16

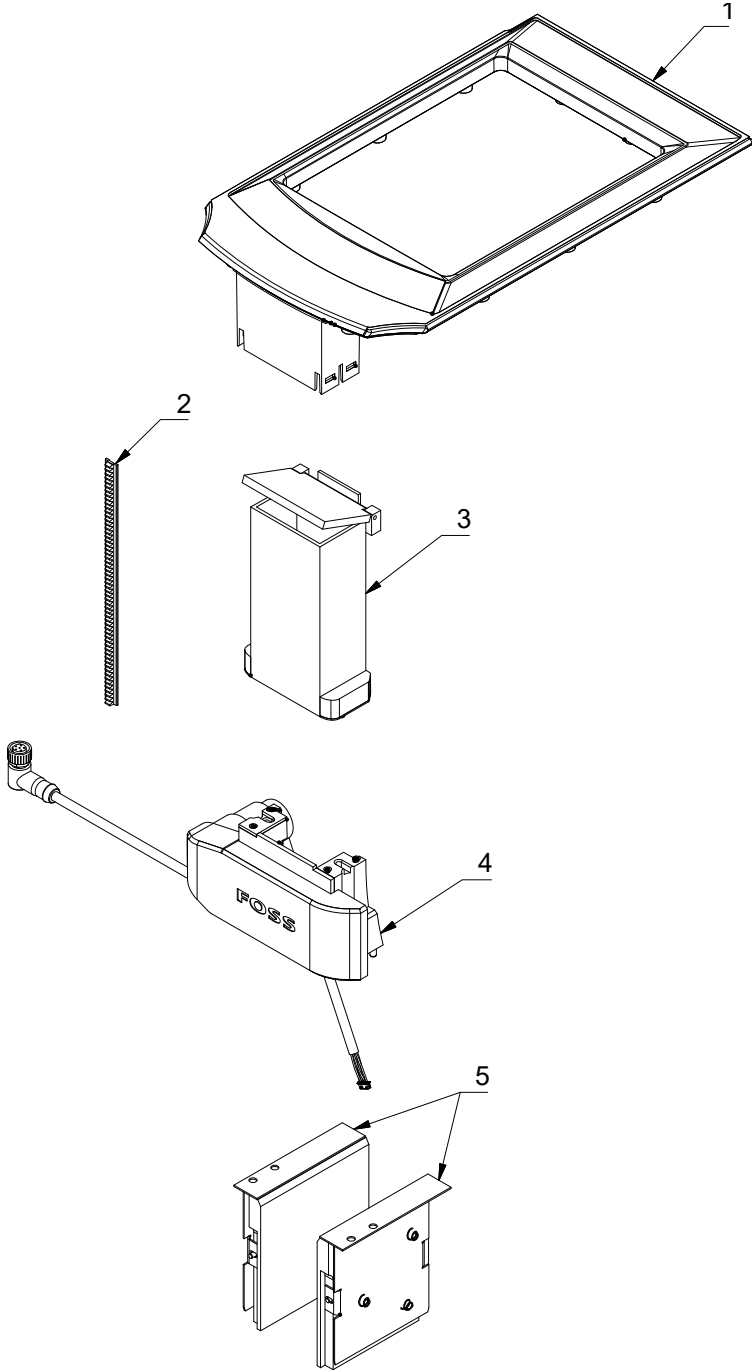
800-2

16 Sample Transport Module Gen. 2

Drawing No.: 60088364 *Page:* 900-1

Pos.	Part No.	Description	Prod. No.
1	60066502	Top Lid, STM SP	
2	60066504	Cam Thread SP	
3	60066600	Tower Unit, STM SP	
	60083958	Sample Transport Module Gen 2 SP	
5	60079027	Left and right slide unit STM -SP	

Service Kit: 60083959 STM Gen 2 cable upgrade kit SP



60088364 Doc. Rev:01 Doc.type:95

900

Fig. 17

17 Instrument Accessories

Part No.	Description	Note
60063277	Power Supply	Not illustrated

18 Special Tools

Part No.	Description	Note
60066519	WCT Infratec NOVA/Infratec	Not illustrated /See TN2224
10011779	Test weight Control Kit	Not illustrated
60048065	Picoflex tool	Not illustrated
10010661	Go No Go Pathlength tool	Not illustrated

19 Service Kit

Service Kit: 10011965 Cuvette Glass

Description	Note
Cuvette Glass, 5 pcs.	Not illustrated
Adhesive Tape, 5 pcs.	Not illustrated
Service Instruction	Not illustrated

20 Index

Part No.	Page		
		60066802	30
01052199	6	60066861	22
10005807	6	60066862	22
10010661	36	60066863	22
10011779	36	60068254	26
10011965	36	60072018	8, 10
15710107	30	60072515	12
60044144	24	60078593	24
60044213	26	60079024	18
60048004	26	60079026	30
60048005	6	60079027	34
60048020	26	60080533	8, 10
60048058	6	60083268	26
60048065	36	60083938	26
60048068	24	60083939	26
60048098	24	60083957	30
60061112	6	60083958	34
60061230	22	60088365	24
60061641	18	60088366	8
60061645	14	60089317	28
60062730	26	60089318	10
60062731	26	60089319	28
60062813	26	60089350	28
60062814	24	60100966	22
60062815	24		
60062816	26		
60062817	26		
60062954	26		
60063277	36		
60063289	26		
60063291	6		
60063755	26		
60064282	24		
60064384	24		
60064719	24		
60065386	30		
60066502	34		
60066504	34		
60066519	36		
60066600	34		
60066715	16		
60066767	18		
60066792	22		
60066793	24		
60066794	20		
60066795	6		
60066796	6		
60066797	26		
60066799	16		
60066800	26		
60066801	30		