
Soxtec™ 8000 Spare Parts Manual

6005 2930 / Rev. 2



All information is liable to change without prior notice. For latest information about documentation updates for your specific instrument, please contact your local FOSS representative.

Rev.	Date of Issue	Revised Material
1	2012-09-28	First issue.
2	2013-12-20	Section 5 and 10 updated.

Please inform Technical Communication Team at the address given below, if you have any opinions about or proposals for changes to this manual.

Technical Communication Team

e-mail tig@foss.dk

FOSS Analytical AB, Box 70, SE-263 21 Höganäs, Sweden

Tel Int +46 42 361500, Fax +46 42 340349

Table of Contents

1	General	1
1.1	Explanation of Definitions	1
2	Assembly Identification	2
3	Soxtec 8000 120V / 230V	4
4	Extraction Unit Cpl	6
5	Solvent Addition Valve	8
6	Condensers Cpl	10
7	Inlet of Power and Water	12
8	Sample Motor Connection	14
9	Rotation Motor Cpl	16
10	Drawer Recovery Flask Cpl	18
11	Control Unit Cpl	20
12	Control Unit Cpl 120V / 230V	22
13	Tubings	24
14	Index	27

1 General

This document contains Spare Parts for Soxtec™ 8000.



Warning

Please read Safety Precautions in the Service Manual prior to maintenance or exchange of spare parts.

The system may only be repaired by personnel certified by FOSS.

1.1 Explanation of Definitions

Explanation of definitions used in this manual:

- Drawing No. FOSS drawing number.
- Page Drawing page in FOSS database.
- Part No. Spare part number for ordering.
- Prod. No. FOSS production number.

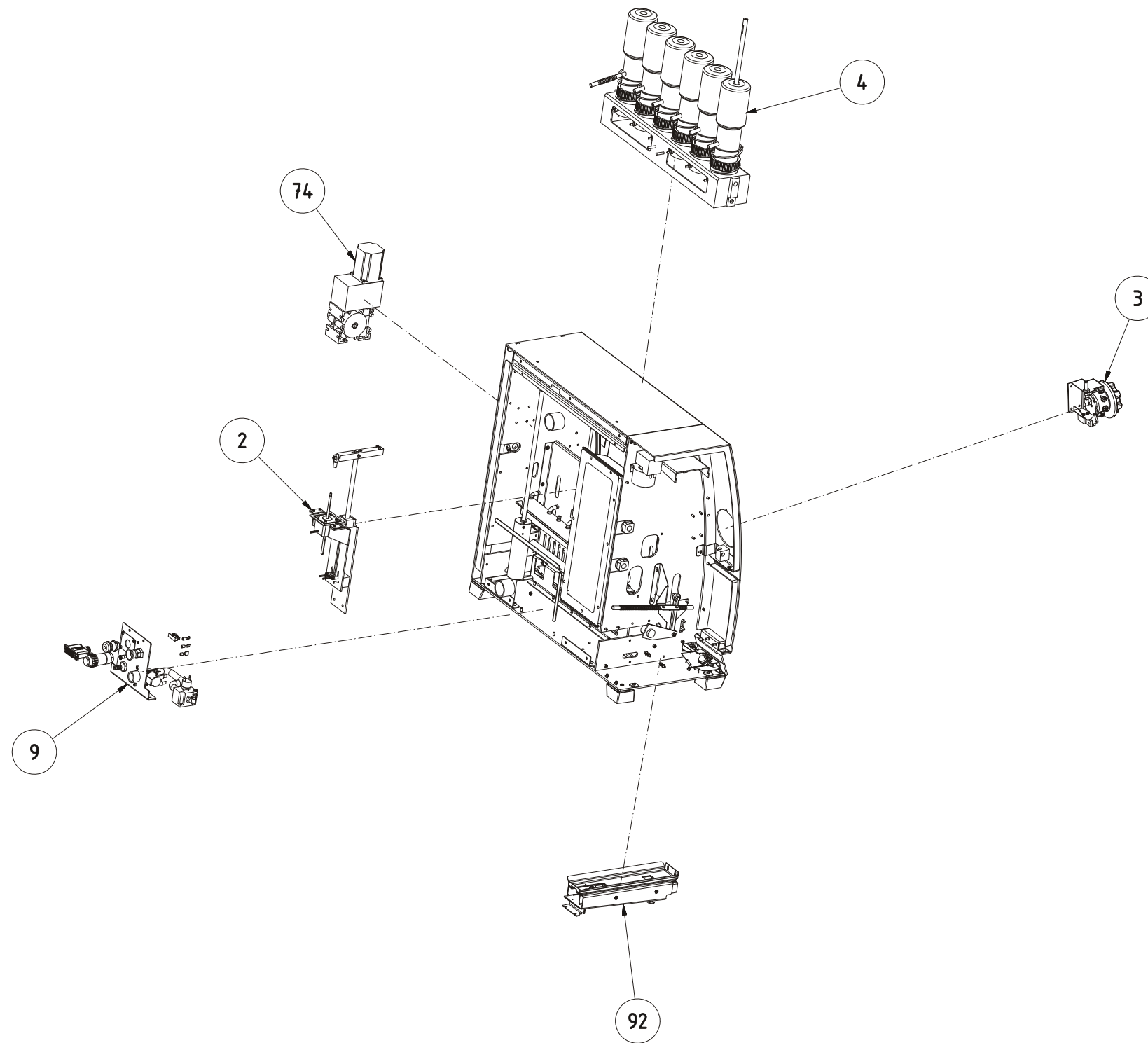
Note:

When ordering new spare parts, please use the Part No. stated in this manual for the parts in question.

2 Assembly Identification

Drawing No.: 60043609 Page: 1

Pos.	Description
2	Sample Motor Connection
3	Solvent Addition Valve
4	Condensers Cpl
9	Inlet Power and Water
74	Rotation Motor Cpl
92	Drawer Recovery Flask Cpl



60045269 Doc. Rev:01 Doc.type:95

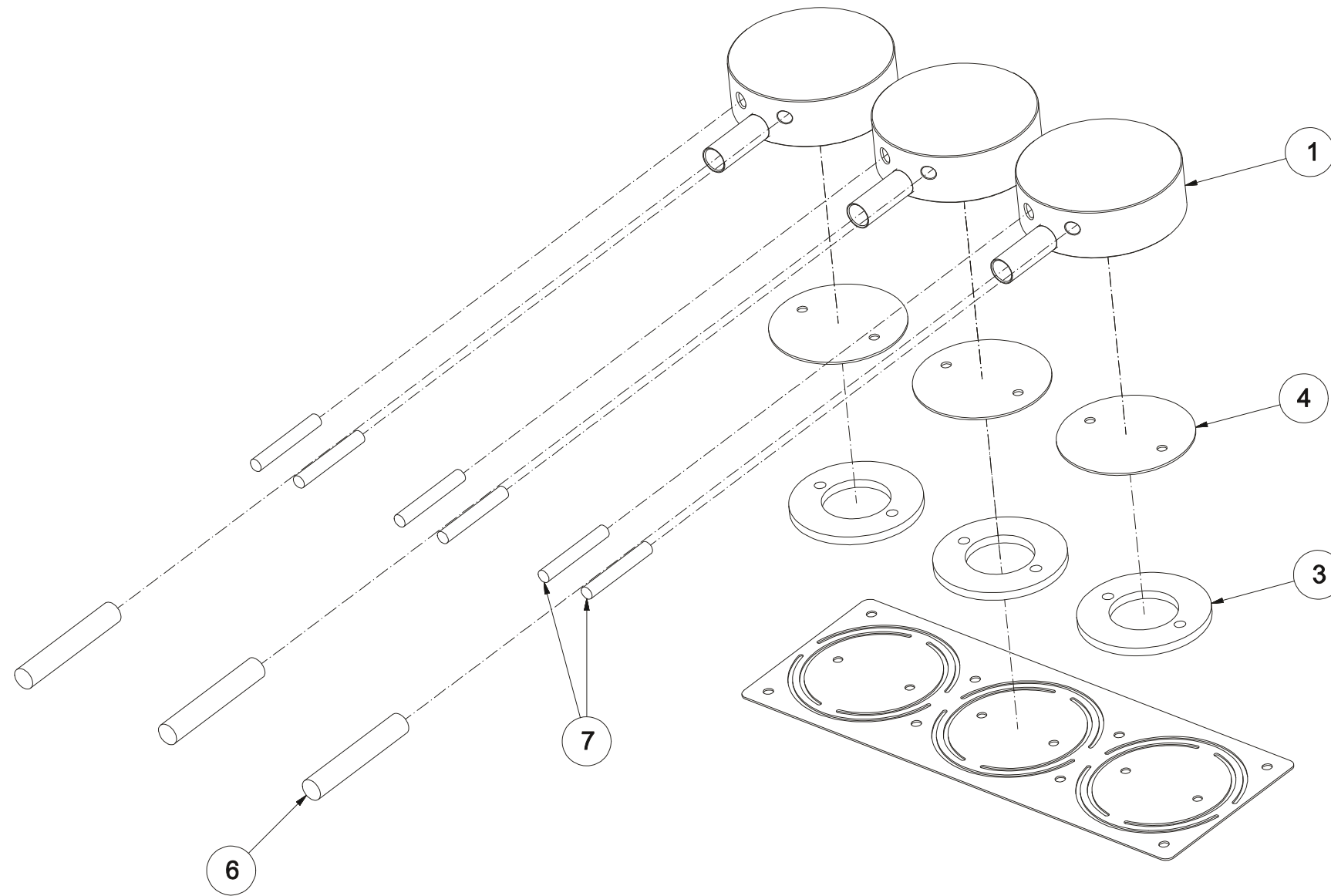
Fig. 1

3 Soxtec 8000 120V / 230V**Drawing No.: 60043609 Page: 1****Service Kit: 60046659 Hot Plate 120V**

Pos.	Description	Prod. No.
1	Heat Plate EU cpl	
3	Insulation ring	
4	Insulation disk	
6	Heating Element 120V EU assembly	
7	Temp Sensor EU assembly	

Service Kit: 60050259 Hot Plate 230V

Pos.	Description	Prod. No.
1	Heat Plate EU cpl	
3	Insulation ring	
4	Insulation disk	
6	Heating Element 230V EU assembly	
7	Temp Sensor EU assembly	



60043609 Doc. Rev:02 Doc.type:95

Fig. 2

4 Extraction Unit Cpl

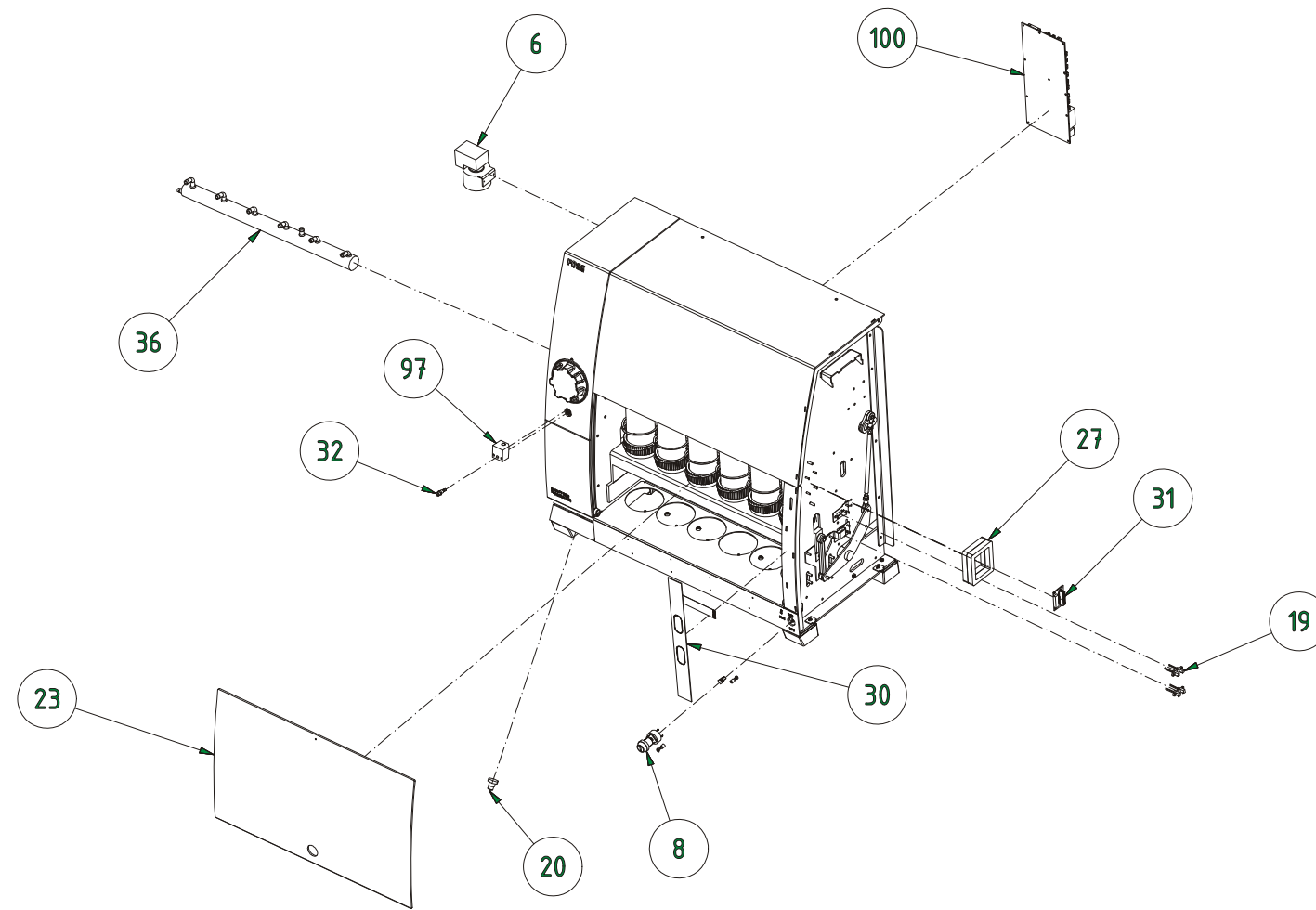
Drawing No.: 60045269 **Page:** 2

Pos.	Part No.	Description	Prod. No.
6	60046643	Pump	
8	60046645	Over temperature Switch	
19	60046654	Optical Reed Switch	
20	60046655	Leak Sensor	
23	60046644	Front Glass	
30	60046650	Overlay	
32	60053860	Luer Lock Female	
36	60046653	Glass Manifold	
55	60046656	Adapter Cable ¹⁾	
97	60053116	Non Return valve	
100	60046642	Main Control Board	
501	60053112	Tubing Silicone 4*6 mm ¹⁾	

¹⁾ Not illustrated.

Service Kit: 60046651 Adapter PCB

Pos.	Description	Prod. No.
27	Seal for FFC 20 pcb	
31	PCB assy FFC 20	



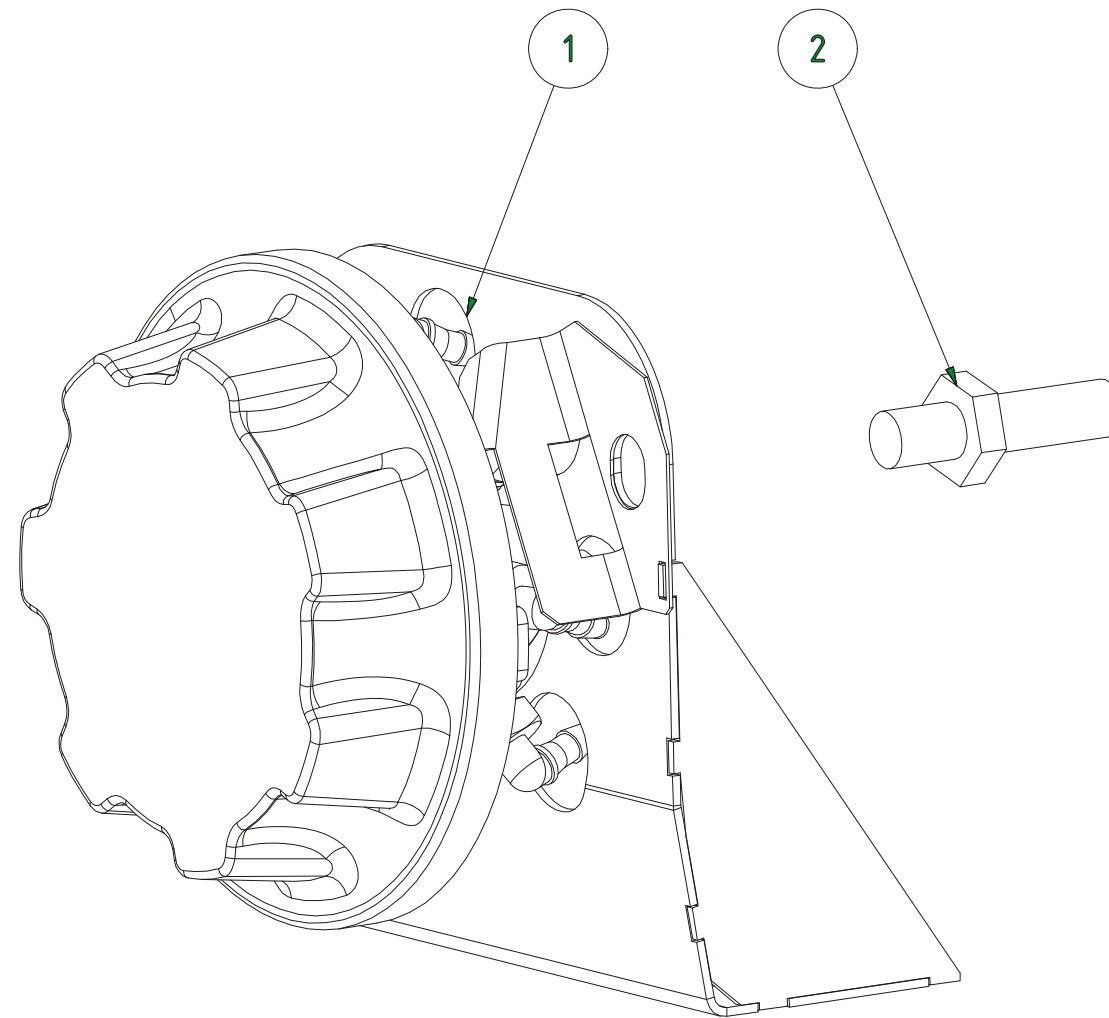
60045269 Doc. Rev:01 Doc.type:95

Fig. 3

5 Solvent Addition Valve

Drawing No.: 60043532 *Page:* 1

Pos.	Part No.	Description	Prod. No.
1	60046627	Inductive sensor	
2	60046626	Solvent addition valve	



60043532 Doc. Rev:02 Doc.type:95

Fig. 4

6 Condensers Cpl

Drawing No.: 60044164 **Page:** 1

Pos.	Part No.	Description	Prod. No.
2	10002259	Support ring	
9	60046640	Condenser Holder	
10	60053370	Spring for Condenser	
12	60047952	Nipple M6230-6	
15	10007327	Spring Rod ¹⁾	

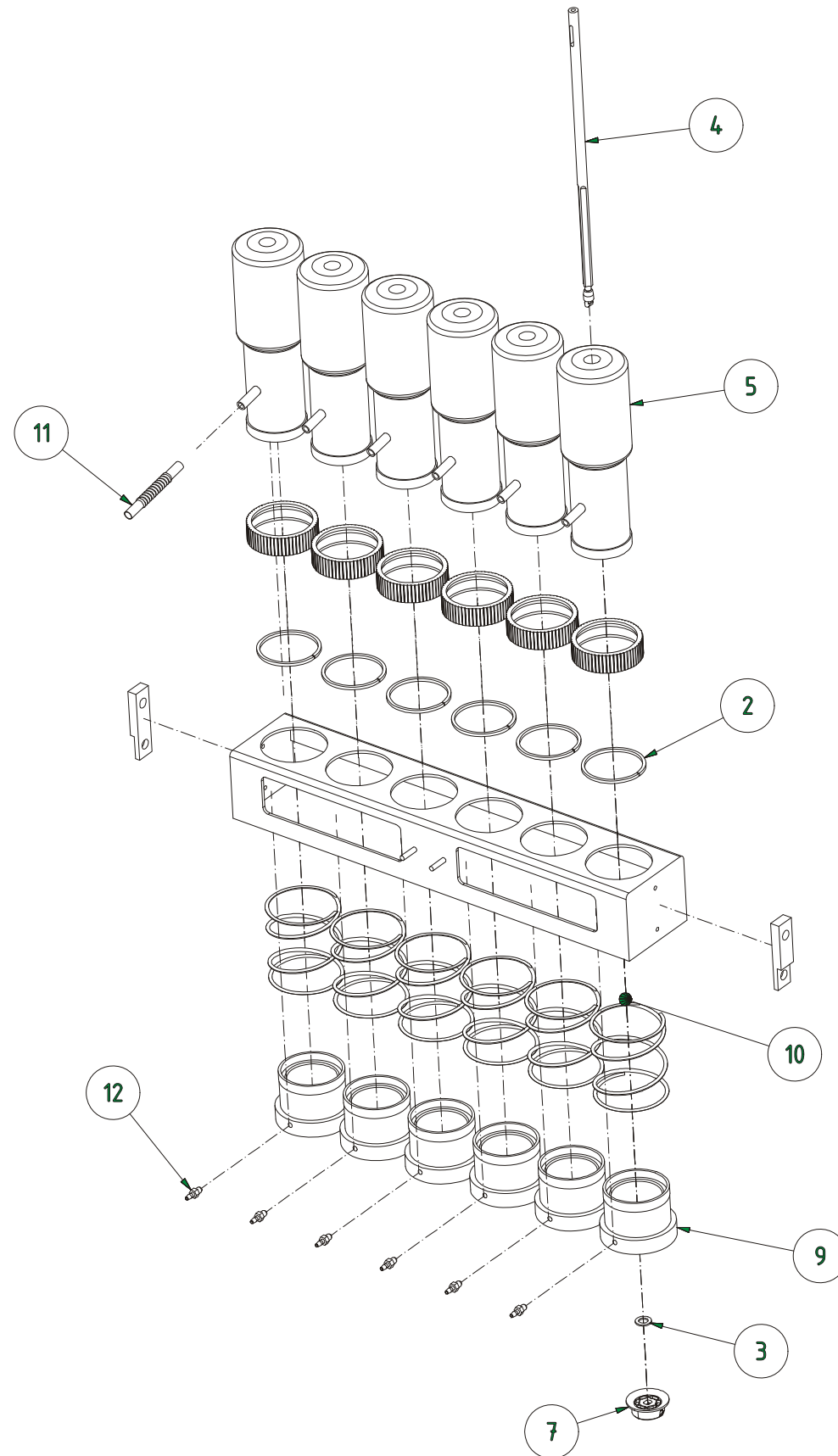
¹⁾ Not illustrated.

Service Kit: 60046660 Sample Rod

Pos.	Description	Prod. No.
3	PTFE Seal	
4	Rod	
7	Thimble retainer	

Service Kit: 60046629 Condenser

Pos.	Description	Prod. No.
5	Condenser	
11	Coil for condenser	



60044164 Doc. Rev:01 Doc.type:95

Fig. 5

7 Inlet of Power and Water

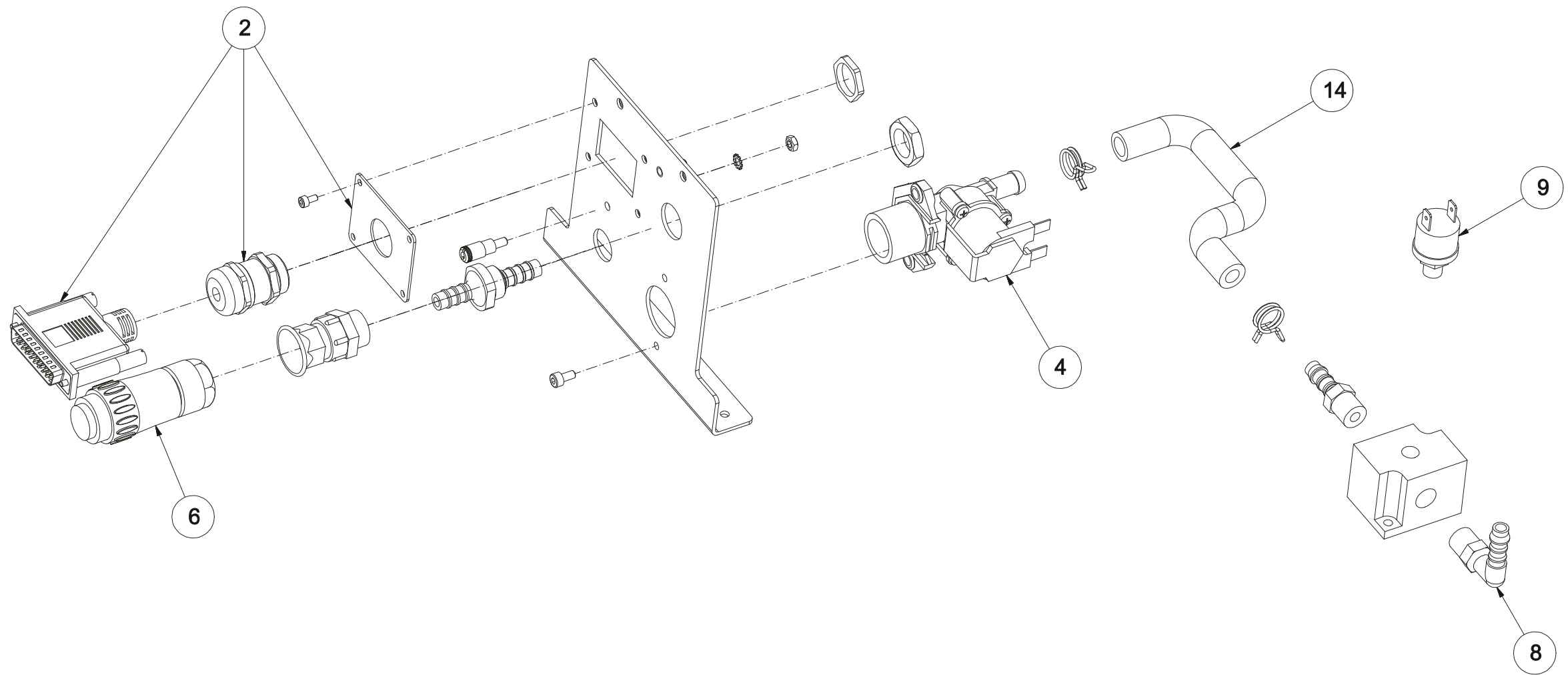
Drawing No.: 60044166 **Page:** 1

Pos.	Part No.	Description	Prod. No.
2	60046646	EU/CU Signal Cable	
6	60046649	Power connection cable	
8	15860002	Hose connection angled	
9	60046648	Pressure Sensor	
14	60053115	Moulded Tubing	

Service Kit: 60046647 Cooling Water valve

Pos.	Description	Prod. No.
3	EU Water vent to PCB cable ¹⁾	
4	Solenoid valve	

¹⁾ Not illustrated.



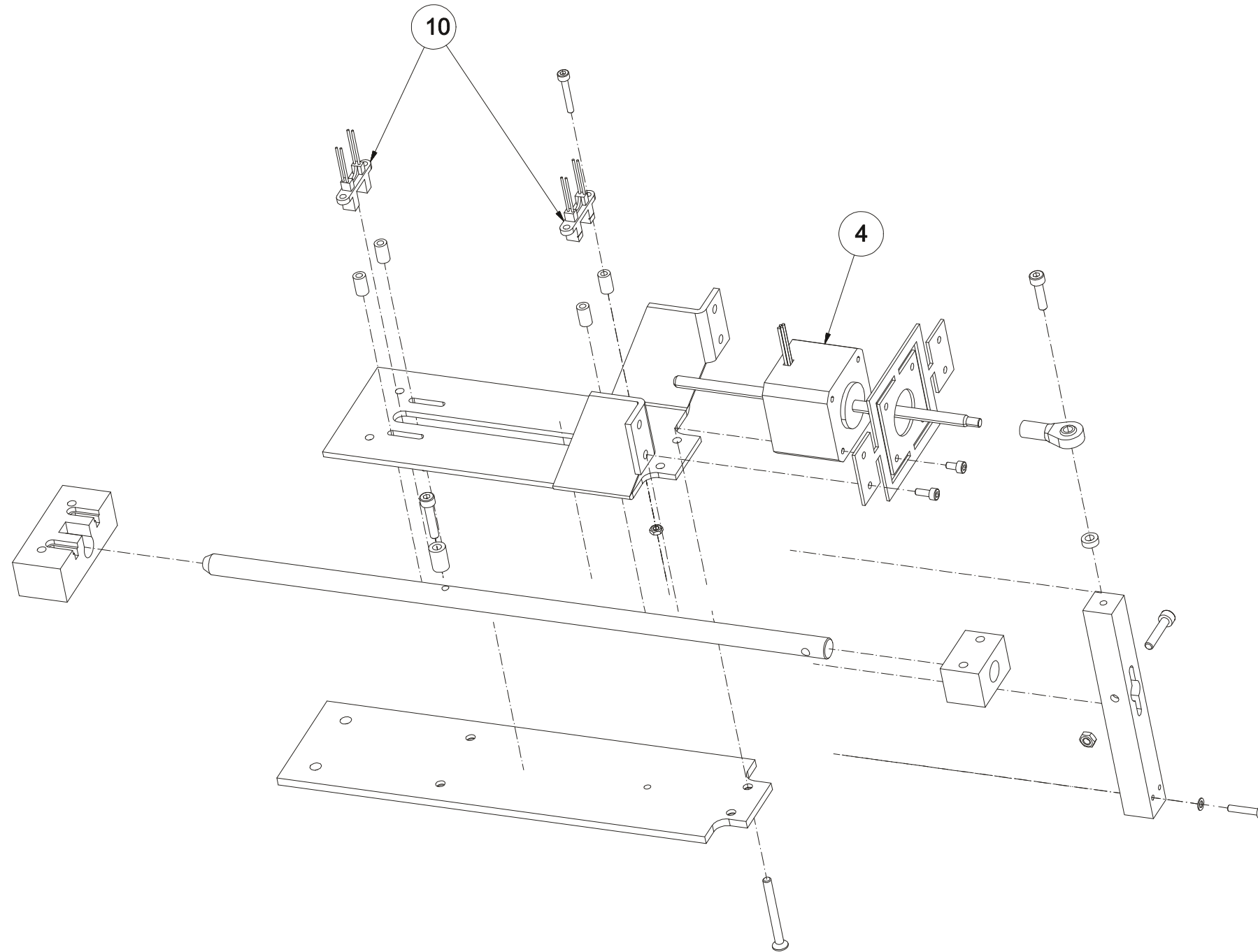
60044166 Doc. Rev:01 Doc.type:95

Fig. 6

8 Sample Motor Connection

Drawing No.: 60043601 *Page:* 1

Pos.	Part No.	Description	Prod. No.
4	60046625	Step Motor	
10	60053113	Opto Sensor	



60043601 Doc. Rev:01 Doc.type:95

Fig. 7

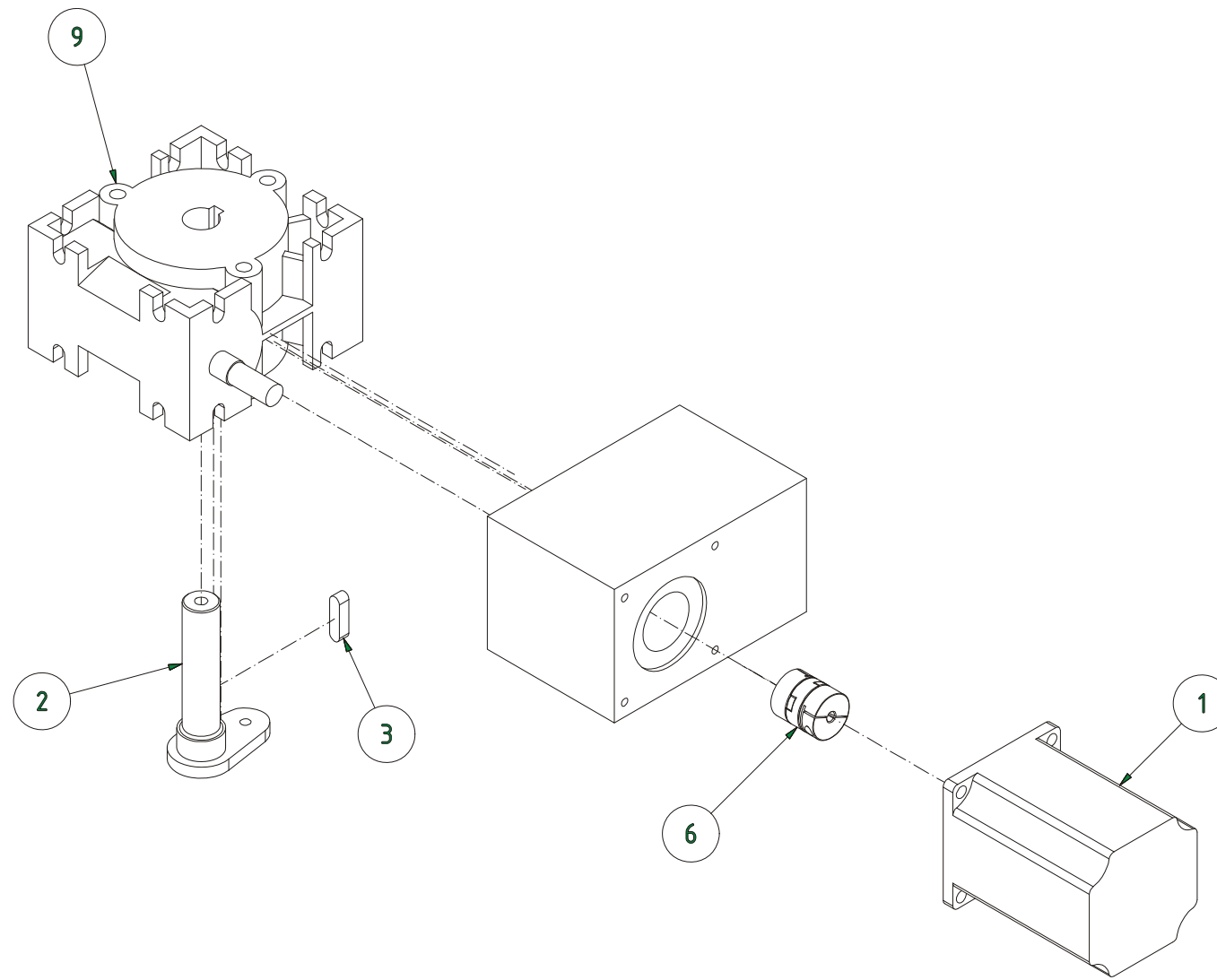
9 Rotation Motor Cpl

Drawing No.: 60044507 **Page:** 1

Pos.	Part No.	Description	Prod. No.
1	60046588	Step Motor	
6	15450071	Coupling	

Service Kit: 60046621 *Worm Gear*

Pos.	Description	Prod. No.
2	Shaft Motor for rotation	
3	Wedge 5X5 L=20 DIN 6885A	
9	Worm Gear	

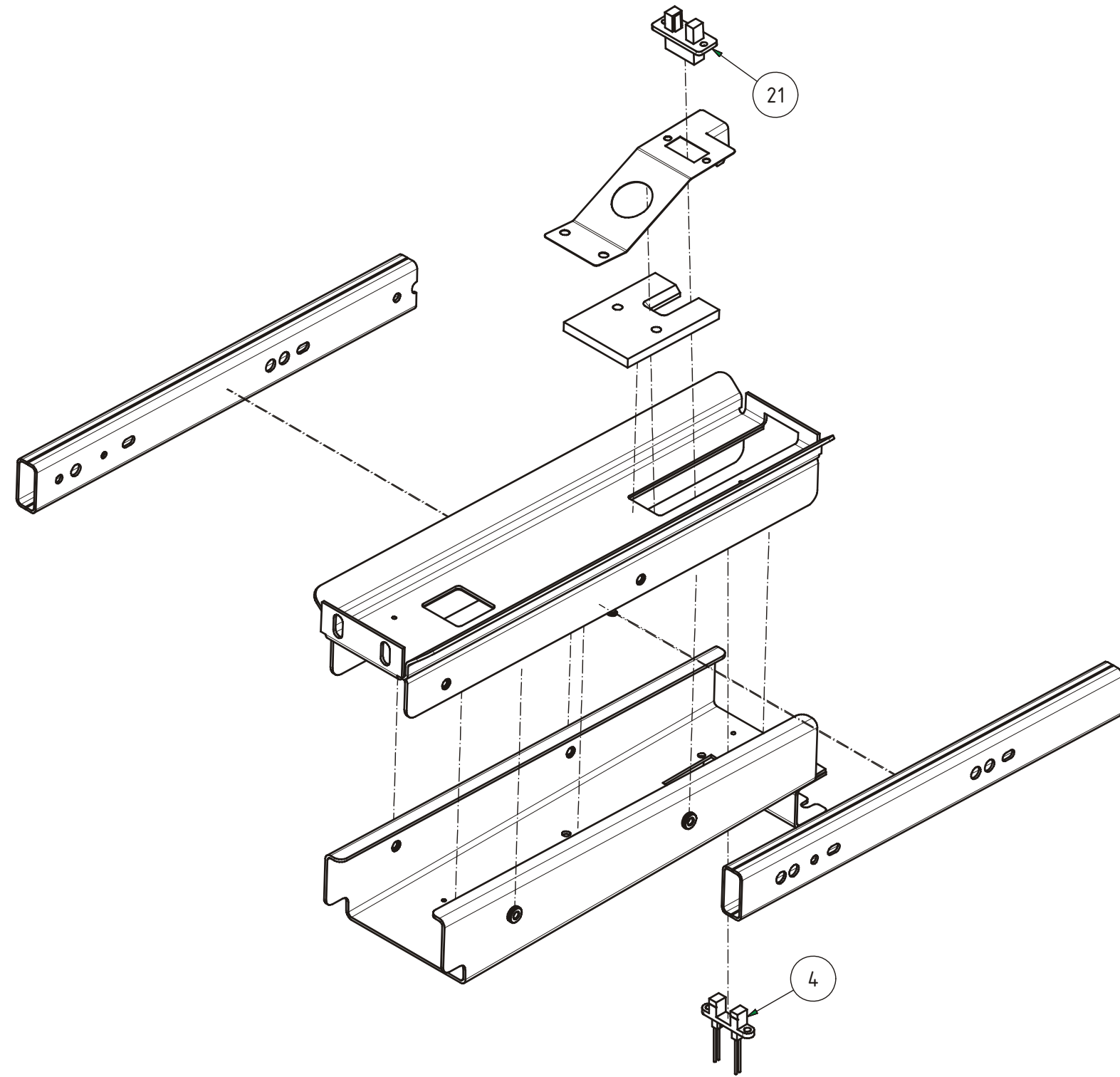


60044507 Doc. Rev:01 Doc.type:95

Fig. 8

10 Drawer Recovery Flask Cpl**Drawing No.: 60046568 Page: 1**

Pos.	Part No.	Description	Prod. No.
4	60046654	Optical reed switch	
21	60053114	Liquid Sensor	



60046568 Doc. Rev:01 Doc.type:95

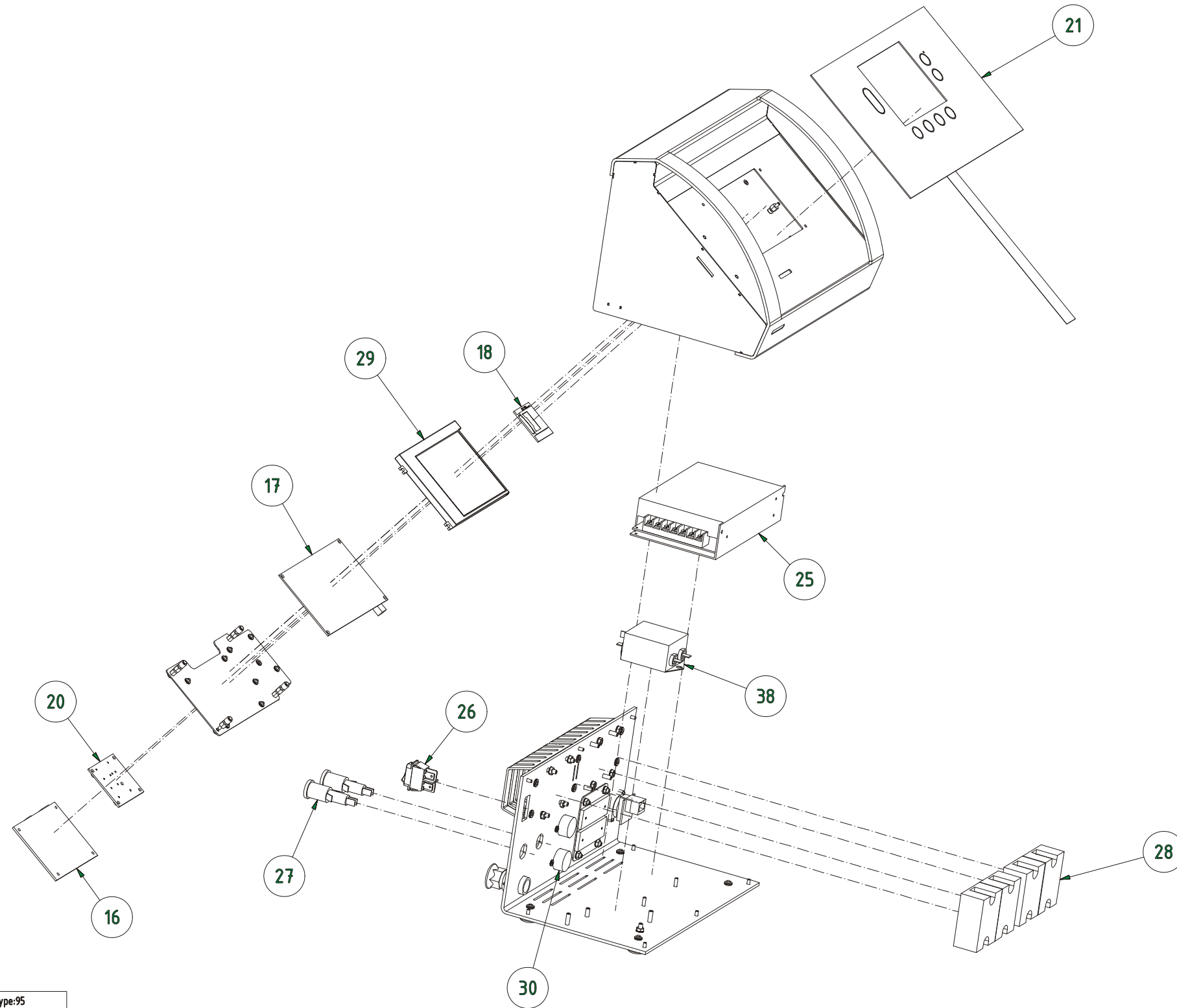
Fig. 9

11 Control Unit Cpl

Drawing No.: 60041479 **Page:** 1

Pos.	Part No.	Description	Prod. No.
7	60046583	Cable kit CU ¹⁾	
15	60046569	SD-Card ¹⁾	
16	60038530	RACM cpl. Typ B	
17	60046576	User Interfae	
18	60026262	PCB Memory Module	
20	60046578	CU Adapter PCB	
21	60046580	Overlay	
25	60046571	Power Supply	
26	60046572	Main Switch	
27	60046573	Fuse Holder	
28	60046574	Solid State releay	
29	60026924	Display	
30	15650299	Chassis Connector ¹⁾	
38	60047405	Noise Filter	

¹⁾ Not illustrated.

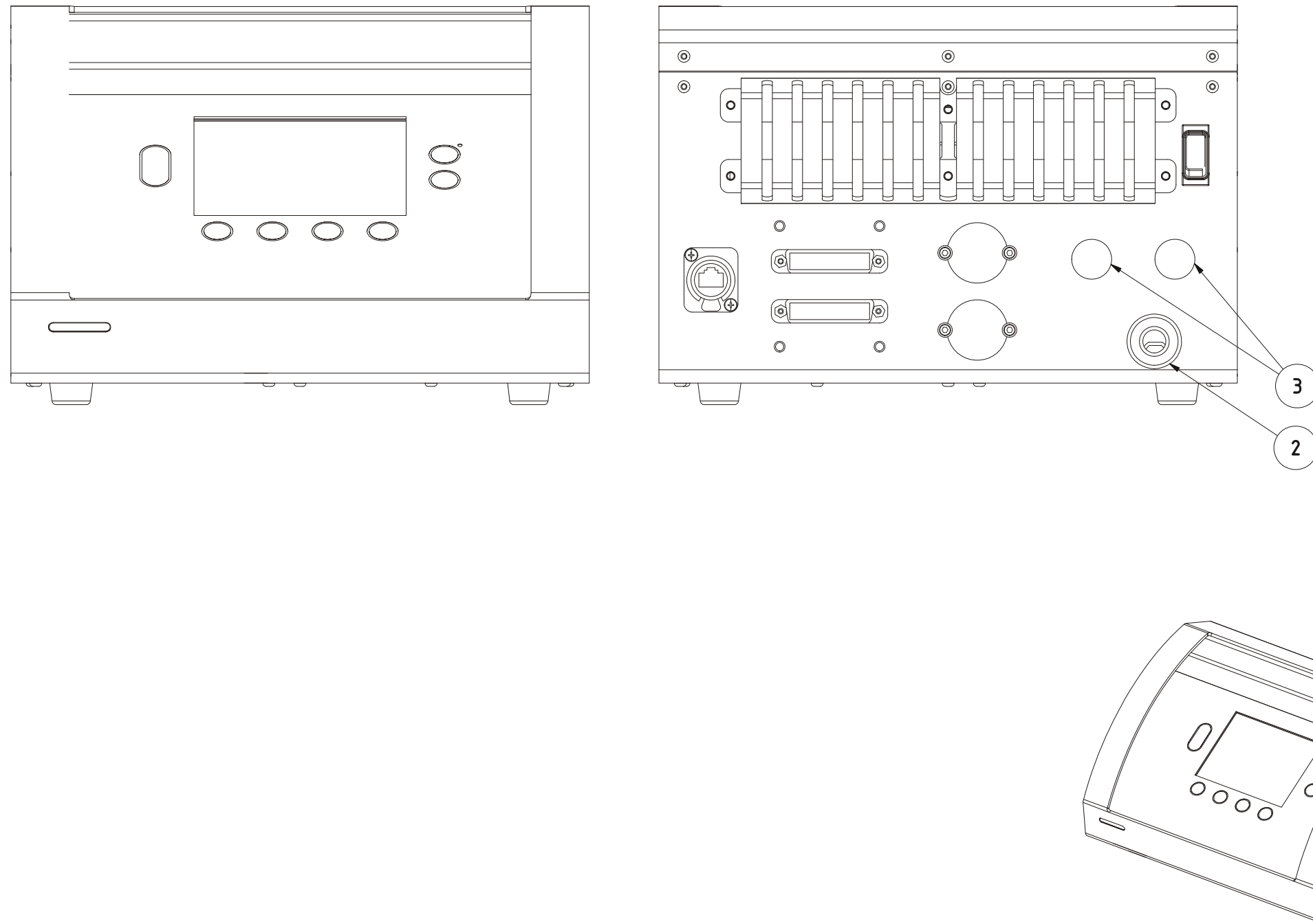


60041479 Doc. Rev:01 Doc.type:95

Fig. 10

12 Control Unit Cpl 120V / 230V**Drawing No.:** -**Page:** -

Pos.	Part No.	Description	Prod. No.
2	60047406	Mains Cable 230V	
2	60046584	Mains Cable 120V	
3	15640166	Fuse 10 AMP	
3	60046582	Fuse 15 AMP	



60045267 Doc. Rev:01 Doc.type:95

Fig. 11

13 Tubings

Drawing No.: -

Page: -

Pos.	Part No.	Description	Prod. No.
1	60047425	PTFE tubing 4, 5 mm, /m, 0.6 m	
2	60047425	PTFE tubing 4, 5 mm, /m, 0.55 m	
3	60047425	PTFE tubing 4, 5 mm, /m, 0.6 m	
4	60047425	PTFE tubing 4, 5 mm, /m, 0.65 m	
5	60047425	PTFE tubing 4, 5 mm, /m, 0.7 m	
6	60047425	PTFE tubing 4, 5 mm, /m, 0.75 m	
7	60047425	PTFE tubing 4, 5 mm, /m, 0.25 m	
8	60047425	PTFE tubing 4, 5 mm, /m, 0.2 m	
9	60050580	PTFE tubing D7, 9/10, 0.25 m	
10	15820204	Tubing EPDM D6, 12 mm, 0.35 m	
11	15820204	Tubing EPDM D6, 12 mm, 0.3 m	
12	60046141	Hose water EU	
13	15820204	Tubing EPDM D6, 12 mm, 0.3 m	
14	15820204	Tubing EPDM D6, 12 mm, 0.3 m	
15	15820204	Tubing EPDM D6, 12 mm, 0.25 m	
16	15820204	Tubing EPDM D6, 12 mm, 0.25 m	
17	60043854	Coil for condenser	
18	60043854	Coil for condenser	
19	60043854	Coil for condenser	
20	60043854	Coil for condenser	
21	60043854	Coil for condenser	
22	60043854	Coil for condenser,	
23	15820204	Tubing EPDM D6, 12 mm, 0.3 m	
24	15820204	Tubing EPDM D6, 12 mm, 0.4 m	
25	15820204	Tubing EPDM D6, 12 mm, 0.3 m	
26	15820204	Tubing EPDM D6, 12 mm, 0.4 m	
27	60023704	Hose silicone 4x6 transparent, 0.26 m	
28	15820204	Tubing EPDM D6, 12 mm, 0.35 m	

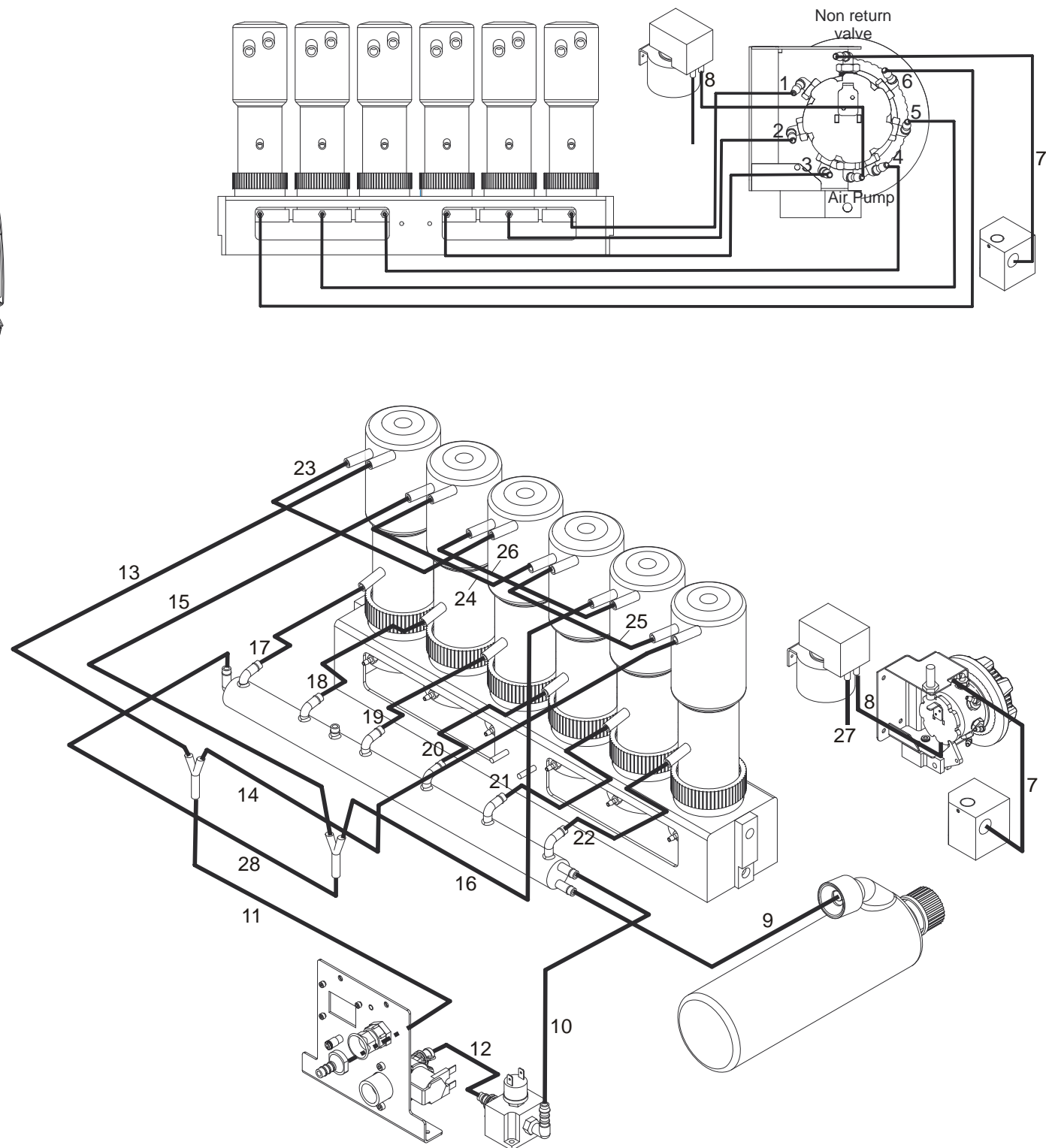
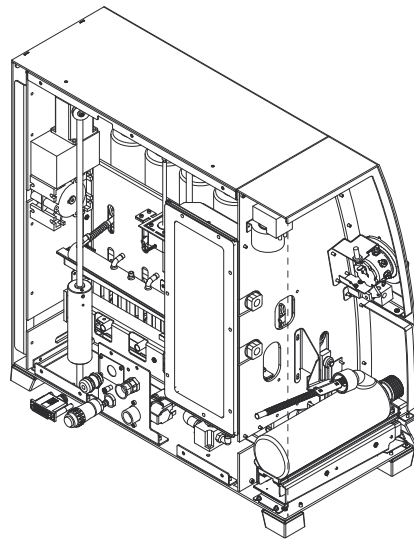


Fig. 12

600454690099b

14 Index

Part No.	Page		
		60050259	4
10002259	10	60050580	24
10007327	10	60053112	6
15450071	16	60053113	14
15640166	22	60053114	18
15650299	20	60053115	12
15820204	24	60053116	6
15860002	12	60053370	10
60023704	24	60053860	6
60026262	20		
60026924	20		
60038530	20		
60043854	24		
60046141	24		
60046569	20		
60046571	20		
60046572	20		
60046573	20		
60046574	20		
60046576	20		
60046578	20		
60046580	20		
60046582	22		
60046583	20		
60046584	22		
60046588	16		
60046621	16		
60046625	14		
60046627	8		
60046629	10		
60046640	10		
60046642	6		
60046643	6		
60046644	6		
60046645	6		
60046646	12		
60046647	12		
60046648	12		
60046649	12		
60046650	6		
60046651	6		
60046653	6		
60046654	6, 18		
60046655	6		
60046656	6		
60046659	4		
60046660	10		
60047405	20		
60047406	22		
60047425	24		
60047952	10		